

Datasheet for ABIN549497

anti-Inhibin alpha antibody (AA 18-23)[1 Image](#)[1 Publication](#)[Go to Product page](#)

Overview

Quantity:	100 µg
Target:	Inhibin alpha (INHA)
Binding Specificity:	AA 18-23
Reactivity:	Human, Mouse, Rat
Host:	Rabbit
Clonality:	Polyclonal
Conjugate:	This Inhibin alpha antibody is un-conjugated
Application:	Western Blotting (WB), Immunohistochemistry (IHC), ELISA, Dot Blot (DB)

Product Details

Purpose:	Rabbit polyclonal antibody raised against synthetic peptide of INHA.
Immunogen:	A synthetic peptide (conjugated with KLH) corresponding to amino acids 18-23 of human INHA.
Cross-Reactivity:	Human, Mouse, Rat
Characteristics:	Antibody Reactive Against Synthetic Peptide.

Target Details

Target:	Inhibin alpha (INHA)
Alternative Name:	Inhibin alpha / INHA (INHA Products)
Gene ID:	3623
Pathways:	Peptide Hormone Metabolism , Hormone Activity , Negative Regulation of Hormone Secretion

Application Details

Application Notes:	ELISA (1:20000) Dot Blot (1:20000) Western Blot (1:500) Immunohistochemistry (1:200) The optimal working dilution should be determined by the end user.
--------------------	---

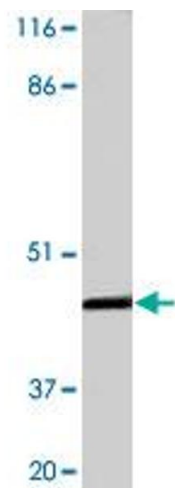
Restrictions:	For Research Use only
---------------	-----------------------

Handling

Format:	Liquid
Buffer:	In buffer containing 0.02 % sodium azide
Preservative:	Sodium azide
Precaution of Use:	This product contains Sodium azide: a POISONOUS AND HAZARDOUS SUBSTANCE which should be handled by trained staff only.
Storage:	-20 °C
Storage Comment:	Store at -20°C. Aliquot to avoid repeated freezing and thawing.

Publications

Product cited in:	Shah, Freites, Maxwell, McCluggage: "Inhibin is more specific than calretinin as an immunohistochemical marker for differentiating sarcomatoid granulosa cell tumour of the ovary from other spindle cell neoplasms." in: Journal of clinical pathology , Vol. 56, Issue 3, pp. 221-4, (2003) (PubMed).
-------------------	--



Western Blotting

Image 1. Western blot of INHA polyclonal antibody with protein-coupled INHA samples. Antibody dilution at 1:500.