

Datasheet for ABIN549510

## anti-PDE7B antibody



[Go to Product page](#)

### 1 Image

#### Overview

Quantity:	100 µg
Target:	PDE7B
Reactivity:	Rat
Host:	Rabbit
Clonality:	Polyclonal
Conjugate:	This PDE7B antibody is un-conjugated
Application:	Western Blotting (WB), Immunoprecipitation (IP)

#### Product Details

Purpose:	Rabbit polyclonal antibody raised against synthetic peptide of Pde7b.
Immunogen:	A synthetic peptide corresponding to rat Pde7b.
Cross-Reactivity:	Mouse, Rat
Characteristics:	Antibody Reactive Against Synthetic Peptide.

#### Target Details

Target:	PDE7B
Alternative Name:	PDE7B ( <a href="#">PDE7B Products</a> )
Gene ID:	140929
Pathways:	<a href="#">cAMP Metabolic Process</a>

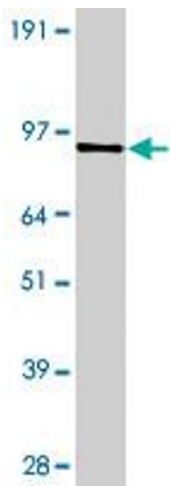
## Application Details

Application Notes:	Western Blot (1:500) Immunoprecipitation (1:250) The optimal working dilution should be determined by the end user.
Restrictions:	For Research Use only

## Handling

Format:	Liquid
Buffer:	In buffer containing 0.02 % sodium azide
Preservative:	Sodium azide
Precaution of Use:	This product contains Sodium azide: a POISONOUS AND HAZARDOUS SUBSTANCE which should be handled by trained staff only.
Storage:	-20 °C
Storage Comment:	Store at -20°C. Aliquot to avoid repeated freezing and thawing.

## Images



### Western Blotting

**Image 1.** Western blot of Pde7b polyclonal antibody with protein-coupled Pde7b. Antibody dilution at 1 : 750.