

Datasheet for ABIN549528  
**anti-TLR12 antibody (N-Term)**[Go to Product page](#)[1](#) Image [3](#) Publications

## Overview

Quantity:	100 µg
Target:	TLR12 (Tlr12)
Binding Specificity:	N-Term
Reactivity:	Mouse, Human
Host:	Rabbit
Clonality:	Polyclonal
Conjugate:	This TLR12 antibody is un-conjugated
Application:	Western Blotting (WB), ELISA, Dot Blot (DB)

## Product Details

Purpose:	Rabbit polyclonal antibody raised against synthetic peptide of Tlr12.
Immunogen:	A synthetic peptide (conjugated with KLH) corresponding to N-terminus mouse Tlr12.
Cross-Reactivity:	Human, Mouse
Characteristics:	Antibody Reactive Against Synthetic Peptide.

## Target Details

Target:	TLR12 (Tlr12)
Alternative Name:	TLR12 ( <a href="#">Tlr12 Products</a> )
Gene ID:	384059
Pathways:	<a href="#">Activation of Innate immune Response</a>

## Application Details

Application Notes:	ELISA (1:20000) Dot blot (1:20000) Western Blot (1:500) The optimal working dilution should be determined by the end user.
--------------------	---

Restrictions:	For Research Use only
---------------	-----------------------

## Handling

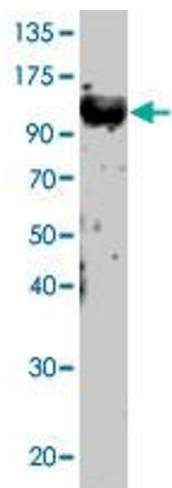
Format:	Liquid
Buffer:	In buffer containing 0.02 % sodium azide
Preservative:	Sodium azide
Precaution of Use:	This product contains Sodium azide: a POISONOUS AND HAZARDOUS SUBSTANCE which should be handled by trained staff only.
Storage:	-20 °C
Storage Comment:	Store at -20°C. Aliquot to avoid repeated freezing and thawing.

## Publications

Product cited in:	ONeill: "Immunology. After the toll rush." in: <b>Science (New York, N.Y.)</b> , Vol. 303, Issue 5663, pp. 1481-2, (2004) ( <a href="#">PubMed</a> ).
-------------------	---

Oshiumi, Matsumoto, Funami, Akazawa, Seya: "TICAM-1, an adaptor molecule that participates in Toll-like receptor 3-mediated interferon-beta induction." in: **Nature immunology**, Vol. 4, Issue 2, pp. 161-7, (2003) ([PubMed](#)).

Fitzgerald, Rowe, Barnes, Caffrey, Visintin, Latz, Monks, Pitha, Golenbock: "LPS-TLR4 signaling to IRF-3/7 and NF-kappaB involves the toll adapters TRAM and TRIF." in: **The Journal of experimental medicine**, Vol. 198, Issue 7, pp. 1043-55, (2003) ([PubMed](#)).



Western Blotting

**Image 1.** Western Blot of Tlr12 polyclonal antibody at 1:500 dilution was probed with PC-Tlr12 sample.