

Datasheet for ABIN550139

anti-Tryptophan Hydroxylase 1 antibody (pSer58)[Go to Product page](#)**1** Image**2** Publications

Overview

Quantity:	100 µL
Target:	Tryptophan Hydroxylase 1 (TPH1)
Binding Specificity:	pSer58
Reactivity:	Human, Mouse, Rat, Rabbit, Cow, Dog, Zebrafish (Danio rerio), Frog, Primate
Host:	Rabbit
Clonality:	Polyclonal
Conjugate:	This Tryptophan Hydroxylase 1 antibody is un-conjugated
Application:	Western Blotting (WB)

Product Details

Purpose:	Rabbit polyclonal antibody raised against synthetic phosphopeptide of TPH1.
Immunogen:	Synthetic phosphopeptide corresponding to residues surrounding S58 of rabbit TPH1.
Cross-Reactivity:	Cow, Dog, Frog, Human, Mouse, Primate, Rabbit, Rat, Zebrafish (Danio rerio)
Characteristics:	Antibody Reactive Against Synthetic Peptide.

Target Details

Target:	Tryptophan Hydroxylase 1 (TPH1)
Alternative Name:	Tryptophan 5-hydroxylase 1 (TPH1) (TPH1 Products)
Gene ID:	100101558
Pathways:	Feeding Behaviour

Application Details

Application Notes:	Western Blot (1:1000) The optimal working dilution should be determined by the end user.
Restrictions:	For Research Use only

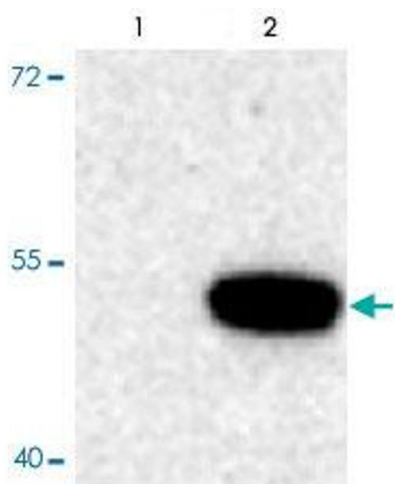
Handling

Format:	Liquid
Buffer:	In 10 mM HEPES, 150 mM NaCl, pH 7.5 (50 % glycerol, 10 % BSA)
Storage:	-20 °C
Storage Comment:	Store at -20°C. Aliquot to avoid repeated freezing and thawing.

Publications

Product cited in:	Martínez, Knappskog, Haavik: "A structural approach into human tryptophan hydroxylase and its implications for the regulation of serotonin biosynthesis." in: Current medicinal chemistry , Vol. 8, Issue 9, pp. 1077-91, (2001) (PubMed). Jiang, Yohrling, Schmitt, Vrana, Yohrling, Schmitt: "Identification of substrate orienting and phosphorylation sites within tryptophan hydroxylase using homology-based molecular modeling." in: Journal of molecular biology , Vol. 302, Issue 4, pp. 1005-17, (2000) (PubMed).
-------------------	--

Images



Western Blotting

Image 1. Western blot of recombinant tryptophan hydroxylase incubated in the absence (Control) and presence of cAMP-dependent protein kinase (PKA) showing specific immunolabeling of the ~53k TPH1 protein phosphorylated at Ser58.