



[Go to Product page](#)

Datasheet for ABIN550178
anti-GAP43 antibody (pSer41)

1 Image

1 Publication

Overview

| | |
|----------------------|--|
| Quantity: | 100 µL |
| Target: | GAP43 |
| Binding Specificity: | pSer41 |
| Reactivity: | Human, Rat, Mouse, Chicken, Cow, Zebrafish (Danio rerio), Dog, Frog, Primate |
| Host: | Rabbit |
| Clonality: | Polyclonal |
| Conjugate: | This GAP43 antibody is un-conjugated |
| Application: | Western Blotting (WB) |

Product Details

| | |
|-------------------|--|
| Purpose: | Rabbit polyclonal antibody raised against synthetic phosphopeptide of Gap43. |
| Immunogen: | Synthetic phosphopeptide corresponding to residues surrounding S41 of rat Gap43. |
| Specificity: | Specific for the ~50k Gap43 protein phosphorylated at Ser41. In some tissues This antibody also recognizes a higher molecular weight protein that is also recognized by the pan Gap43 antibody, that may be a Gap43 aggregate or oligomer. |
| Cross-Reactivity: | Chicken, Cow, Dog, Frog, Human, Mouse, Primate, Rat, Zebrafish (Danio rerio) |
| Characteristics: | Antibody Reactive Against Synthetic Peptide. |

Target Details

| | |
|---------|-------|
| Target: | GAP43 |
|---------|-------|

Target Details

Alternative Name: GAP43 ([GAP43 Products](#))

Gene ID: 29423

Application Details

Application Notes: Western Blot (1:1000)

The optimal working dilution should be determined by the end user.

Restrictions: For Research Use only

Handling

Format: Liquid

Buffer: In 10 mM HEPES, 150 mM NaCl, pH 7.5 (50 % glycerol, 10 % BSA)

Storage: -20 °C

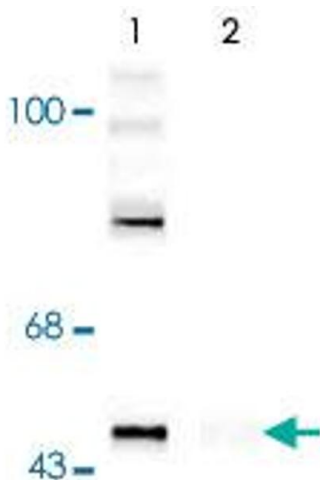
Storage Comment: Store at -20°C.

Aliquot to avoid repeated freezing and thawing.

Publications

Product cited in: Hulo, Alberi, Laux, Muller, Caroni: "A point mutant of GAP-43 induces enhanced short-term and long-term hippocampal plasticity." in: **The European journal of neuroscience**, Vol. 15, Issue 12, pp. 1976-82, (2002) ([PubMed](#)).

Images



Western Blotting

Image 1. Western blot of rat cortex lysate showing specific immunolabeling of the ~50k Gap43 protein phosphorylated at Ser41 (Control). The phosphospecificity of this labeling is shown in the second lane (lambda-phosphatase: lambda-Ptase). The blot is identical to the control except that it was incubated in lambda-Ptase (1200 units for 30 min) before being exposed to the Gap43 (phospho S41) polyclonal antibody. The immunolabeling of Gap43 is completely

eliminated by treatment with lambda-Ptase.