

Datasheet for ABIN550213

anti-KCNC1 antibody (pSer503)**1** Image**1** Publication[Go to Product page](#)

Overview

Quantity:	100 µL
Target:	KCNC1
Binding Specificity:	pSer503
Reactivity:	Mouse, Rat
Host:	Rabbit
Clonality:	Polyclonal
Conjugate:	This KCNC1 antibody is un-conjugated
Application:	Western Blotting (WB), Immunofluorescence (IF), Immunohistochemistry (Frozen Sections) (IHC (fro))

Product Details

Purpose:	Rabbit polyclonal antibody raised against synthetic phosphopeptide of Kcnc1.
Immunogen:	Synthetic phosphopeptide (conjugated with KLH) corresponding to residues surrounding S503 of mouse and rat Kcnc1.
Isotype:	IgG
Cross-Reactivity:	Mouse, Rat
Characteristics:	Antibody Reactive Against Synthetic Peptide.

Target Details

Target:	KCNC1
---------	-------

Target Details

Alternative Name: KCNC1 ([KCNC1 Products](#))

Application Details

Application Notes: Immunohistochemistry (Frozen sections) (1:1000)
Western Blot (1:1000)
The optimal working dilution should be determined by the end user.

Restrictions: For Research Use only

Handling

Format: Liquid

Buffer: In 10 mM HEPES, 150 mM NaCl, pH 7.5 (50 % glycerol, 10 % BSA)

Storage: -20 °C,-80 °C

Storage Comment: Store at -20°C. For long term storage store at -80°C.
Aliquot to avoid repeated freezing and thawing.

Publications

Product cited in: von Hehn, Bhattacharjee, Kaczmarek: "Loss of Kv3.1 tonotopicity and alterations in cAMP response element-binding protein signaling in central auditory neurons of hearing impaired mice." in: **The Journal of neuroscience : the official journal of the Society for Neuroscience**, Vol. 24, Issue 8, pp. 1936-40, (2004) ([PubMed](#)).

Images

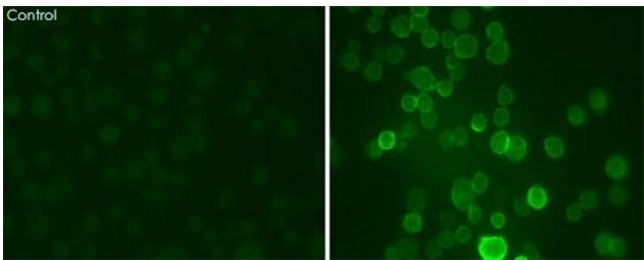


Image 1. Immunostaining of medial nucleus of the trapezoid body (MNTB) cells with Kcnc1 (phospho S503) polyclonal antibody . The left panel shows control cells. The right panel shows cells that have been exposed to the Kcnc1 activator PMA.