

Datasheet for ABIN550290
anti-BACE2 antibody (AA 496-511)[Go to Product page](#)

1 Image

3 Publications

Overview

Quantity:	100 µg
Target:	BACE2
Binding Specificity:	AA 496-511
Reactivity:	Human
Host:	Rabbit
Clonality:	Polyclonal
Conjugate:	This BACE2 antibody is un-conjugated
Application:	Western Blotting (WB)

Product Details

Purpose:	Rabbit polyclonal antibody raised against synthetic peptide of BACE2.
Immunogen:	A synthetic peptide corresponding to amino acids 496-511 of human BACE2.
Cross-Reactivity:	Human
Characteristics:	Antibody Reactive Against Synthetic Peptide.

Target Details

Target:	BACE2
Alternative Name:	BACE2 (BACE2 Products)
Gene ID:	25825

Application Details

Application Notes: The optimal working dilution should be determined by the end user.

Restrictions: For Research Use only

Handling

Format: Liquid

Buffer: In PBS (0.02 % sodium azide)

Preservative: Sodium azide

Precaution of Use: This product contains Sodium azide: a POISONOUS AND HAZARDOUS SUBSTANCE which should be handled by trained staff only.

Storage: -20 °C

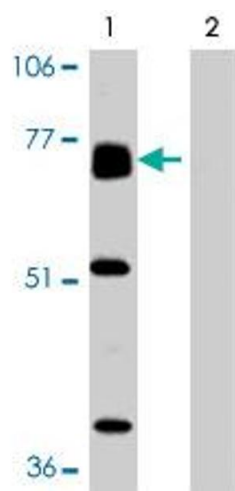
Storage Comment: Store at -20°C.
Aliquot to avoid repeated freezing and thawing.

Publications

Product cited in: Acquati, Accarino, Nucci, Fumagalli, Jovine, Ottolenghi, Taramelli: "The gene encoding DRAP (BACE2), a glycosylated transmembrane protein of the aspartic protease family, maps to the down critical region." in: **FEBS letters**, Vol. 468, Issue 1, pp. 59-64, (2000) ([PubMed](#)).

Bennett, Babu-Khan, Loeloff, Louis, Curran, Citron, Vassar: "Expression analysis of BACE2 in brain and peripheral tissues." in: **The Journal of biological chemistry**, Vol. 275, Issue 27, pp. 20647-51, (2000) ([PubMed](#)).

Farzan, Schnitzler, Vasilieva, Leung, Choe: "BACE2, a beta -secretase homolog, cleaves at the beta site and within the amyloid-beta region of the amyloid-beta precursor protein." in: **Proceedings of the National Academy of Sciences of the United States of America**, Vol. 97, Issue 17, pp. 9712-7, (2000) ([PubMed](#)).



Western Blotting

Image 1. Western blot analysis of BACE2 expression in human heart tissue in the absence (Lane 1) and presence (Lane 2) of blocking peptide in BACE2 polyclonal antibody.