

Datasheet for ABIN550296
anti-CXCR6 antibody (AA 319-338)[Go to Product page](#)

1 Image

Overview

Quantity:	100 µg
Target:	CXCR6
Binding Specificity:	AA 319-338
Reactivity:	Human
Host:	Rabbit
Clonality:	Polyclonal
Conjugate:	This CXCR6 antibody is un-conjugated
Application:	Western Blotting (WB)

Product Details

Purpose:	Rabbit polyclonal antibody raised against synthetic peptide of CXCR6.
Immunogen:	A synthetic peptide corresponding to amino acids 319-338 of human CXCR6.
Cross-Reactivity:	Human
Characteristics:	Antibody Reactive Against Synthetic Peptide.

Target Details

Target:	CXCR6
Alternative Name:	CD186 / CXCR6 (CXCR6 Products)
Gene ID:	10663

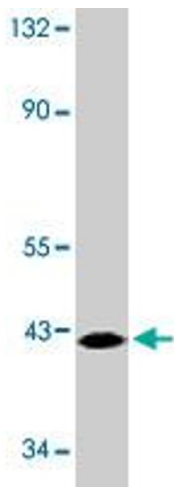
Application Details

Application Notes:	The optimal working dilution should be determined by the end user.
Restrictions:	For Research Use only

Handling

Format:	Liquid
Buffer:	In PBS (0.02 % sodium azide)
Preservative:	Sodium azide
Precaution of Use:	This product contains Sodium azide: a POISONOUS AND HAZARDOUS SUBSTANCE which should be handled by trained staff only.
Storage:	-20 °C
Storage Comment:	Store at -20°C. Aliquot to avoid repeated freezing and thawing.

Images



Western Blotting

Image 1. Western blot analysis of CXCR6 expression in SW-1353 cell lysates probed with CXCR6 polyclonal antibody at 0.5 ug/mL .