

Datasheet for ABIN550297  
**anti-CXCR6 antibody (AA 11-25)**[Go to Product page](#)

## 1 Image

## Overview

Quantity:	100 µg
Target:	CXCR6
Binding Specificity:	AA 11-25
Reactivity:	Human
Host:	Rabbit
Clonality:	Polyclonal
Conjugate:	This CXCR6 antibody is un-conjugated
Application:	Western Blotting (WB)

## Product Details

Purpose:	Rabbit polyclonal antibody raised against synthetic peptide of CXCR6.
Immunogen:	A synthetic peptide corresponding to amino acids 11-25 of Human CXCR6.
Cross-Reactivity:	Human
Characteristics:	Antibody Reactive Against Synthetic Peptide.

## Target Details

Target:	CXCR6
Alternative Name:	CD186 / CXCR6 ( <a href="#">CXCR6 Products</a> )
Gene ID:	10663

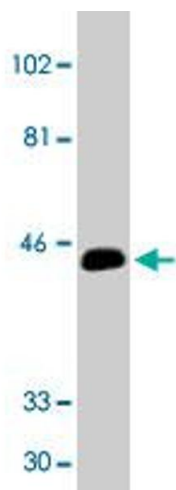
Application Details

Application Notes:	The optimal working dilution should be determined by the end user.
Restrictions:	For Research Use only

Handling

Format:	Liquid
Buffer:	In PBS (0.02 % sodium azide)
Preservative:	Sodium azide
Precaution of Use:	This product contains Sodium azide: a POISONOUS AND HAZARDOUS SUBSTANCE which should be handled by trained staff only.
Storage:	-20 °C
Storage Comment:	Store at -20°C. Aliquot to avoid repeated freezing and thawing.

Images



**Western Blotting**

**Image 1.** Western blot analysis of CXCR6 expression in human spleen tissue probed with CXCR6 polyclonal antibody at 1 ug/mL .