

Datasheet for ABIN550338
anti-CCR8 antibody (AA 183-201)[Go to Product page](#)

1 Image

Overview

Quantity:	100 µg
Target:	CCR8
Binding Specificity:	AA 183-201
Reactivity:	Human
Host:	Rabbit
Clonality:	Polyclonal
Conjugate:	This CCR8 antibody is un-conjugated
Application:	Western Blotting (WB)

Product Details

Purpose:	Rabbit polyclonal antibody raised against synthetic peptide of CCR8.
Immunogen:	A synthetic peptide corresponding to amino acids 183-201 of human CCR8.
Cross-Reactivity:	Human
Characteristics:	Antibody Reactive Against Synthetic Peptide.

Target Details

Target:	CCR8
Alternative Name:	CDw198 / CCR8 (CCR8 Products)
Gene ID:	1237

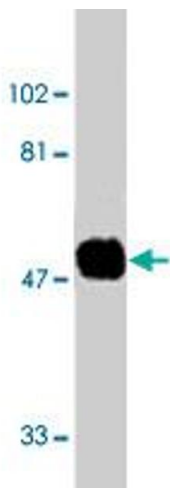
Application Details

Application Notes:	Western Blot (0.5-1.0 µg/mL) The optimal working dilution should be determined by the end user.
Restrictions:	For Research Use only

Handling

Format:	Liquid
Buffer:	In PBS (0.02 % sodium azide)
Preservative:	Sodium azide
Precaution of Use:	This product contains Sodium azide: a POISONOUS AND HAZARDOUS SUBSTANCE which should be handled by trained staff only.
Storage:	-20 °C
Storage Comment:	Store at -20°C. Aliquot to avoid repeated freezing and thawing.

Images



Western Blotting

Image 1. Western blot analysis using CCR8 polyclonal antibody at 1 ug/mL on human spleen tissue lysates.