

Datasheet for ABIN550352  
**anti-CX3CR1 antibody (AA 2-21)**[Go to Product page](#)

## 1 Image

## Overview

Quantity:	100 µg
Target:	CX3CR1
Binding Specificity:	AA 2-21
Reactivity:	Human, Mouse, Rat
Host:	Rabbit
Clonality:	Polyclonal
Conjugate:	This CX3CR1 antibody is un-conjugated
Application:	Western Blotting (WB)

## Product Details

Purpose:	Rabbit polyclonal antibody raised against synthetic peptide of CX3CR1.
Immunogen:	A synthetic peptide corresponding to amino acids 2-21 of human CX3CR1.
Cross-Reactivity:	Human, Mouse, Rat
Characteristics:	Antibody Reactive Against Synthetic Peptide.

## Target Details

Target:	CX3CR1
Alternative Name:	CX3CR1 / GPR13 ( <a href="#">CX3CR1 Products</a> )
Gene ID:	1524
Pathways:	<a href="#">Cellular Response to Molecule of Bacterial Origin</a>

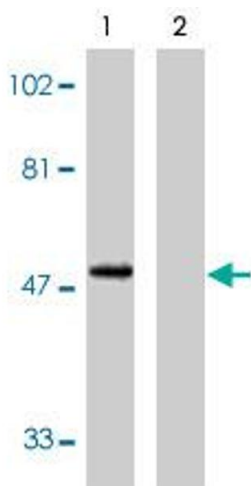
## Application Details

Application Notes:	Western Blot (0.5-1.0 µg/mL) The optimal working dilution should be determined by the end user.
Restrictions:	For Research Use only

## Handling

Format:	Liquid
Buffer:	In PBS (0.02 % sodium azide)
Preservative:	Sodium azide
Precaution of Use:	This product contains Sodium azide: a POISONOUS AND HAZARDOUS SUBSTANCE which should be handled by trained staff only.
Storage:	-20 °C
Storage Comment:	Store at -20°C. Aliquot to avoid repeated freezing and thawing.

## Images



### Western Blotting

**Image 1.** Western blot analysis using CX3CR1 polyclonal antibody at 1 ug/mL on human spleen lysate in the absence (lane 1) and presence (lane 2) of specific blocking peptide.