

Datasheet for ABIN5505576

Insulin Receptor Protein (INSR) (DYKDDDDK-His Tag)[Go to Product page](#)**1** Image

Overview

Quantity:	20 µg
Target:	Insulin Receptor (INSR)
Origin:	Human
Source:	HEK-293 Cells
Protein Type:	Recombinant
Purification tag / Conjugate:	This Insulin Receptor protein is labelled with DYKDDDDK-His Tag.
Application:	Antibody Production (AbP), Standard (STD)

Product Details

Characteristics:	<ul style="list-style-type: none">• Recombinant human CD220 / INSR (C-term DDK/His tag, transcript variant 1) protein expressed in Human HEK293 cells.• Produced with end-sequenced ORF clone
------------------	--

Purity:	> 80 % as determined by SDS-PAGE and Coomassie blue staining
---------	--

Target Details

Target:	Insulin Receptor (INSR)
Alternative Name:	CD220 / INSR (INSR Products)
Background:	This gene encodes a member of the receptor tyrosine kinase family of proteins. The encoded preproprotein is proteolytically processed to generate alpha and beta subunits that form a heterotetrameric receptor. Binding of insulin or other ligands to this receptor activates the insulin signaling pathway, which regulates glucose uptake and release, as well as the synthesis

Target Details

and storage of carbohydrates, lipids and protein. Mutations in this gene underlie the inherited severe insulin resistance syndromes including type A insulin resistance syndrome, Donohue syndrome and Rabson-Mendenhall syndrome. Alternative splicing results in multiple transcript variants.

Molecular Weight: 25 kDa

NCBI Accession: [NP_000199](#)

Pathways: [NF-kappaB Signaling](#), [RTK Signaling](#), [AMPK Signaling](#), [Carbohydrate Homeostasis](#), [Regulation of Cell Size](#), [Regulation of Carbohydrate Metabolic Process](#), [Growth Factor Binding](#), [Negative Regulation of Transporter Activity](#)

Application Details

Application Notes: Recombinant human proteins can be used for:
Native antigens for optimized antibody production
Positive controls in ELISA and other antibody assays

Comment: The tag is located at the C-terminal.

Restrictions: For Research Use only

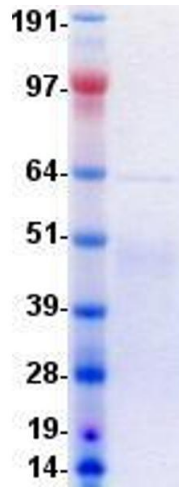
Handling

Concentration: 50 µg/mL

Buffer: 1 x PBS, pH 7.4, 10 % glycerol

Storage: -80 °C

Storage Comment: Store at -80°C. Thaw on ice, aliquot to individual single-use tubes, and then re-freeze immediately. Only 2-3 freeze thaw cycles are recommended.



Western Blotting

Image 1. Validation with Western Blot