

Datasheet for ABIN5505596

NMES1 Protein (GST tag,His tag)



[Go to Product page](#)

1 Image

Overview

Quantity:	20 µg
Target:	NMES1 (C15ORF48)
Origin:	Human
Source:	Insect cells (Sf9)
Protein Type:	Recombinant
Purification tag / Conjugate:	This NMES1 protein is labelled with GST tag,His tag.
Application:	Antibody Production (AbP), Standard (STD)

Product Details

Characteristics:	<ul style="list-style-type: none"> Recombinant human Purified recombinant protein of Human chromosome 15 open reading frame 48 (C15orf48), transcript variant 1, full length, with N-terminal GST tag and C-terminal HIS tag, expressed in sf9, 20 µg (full length, N-term GST tag, C-term HIS tag, transcript variant 1) protein expressed in Sf9 cells. Produced with end-sequenced ORF clone
Purification:	Purified
Purity:	> 80 % as determined by SDS-PAGE and Coomassie blue staining

Target Details

Target:	NMES1 (C15ORF48)
Alternative Name:	chromosome 15 open reading frame 48 (C15ORF48 Products)
Background:	This gene was first identified in a study of human esophageal squamous cell carcinoma

Target Details

tissues. Levels of both the message and protein are reduced in carcinoma samples. In adult human tissues, this gene is expressed in the the esophagus, stomach, small intestine, colon and placenta. Alternatively spliced transcript variants that encode the same protein have been identified.

Molecular Weight:	35.4 kDa
NCBI Accession:	NP_922946

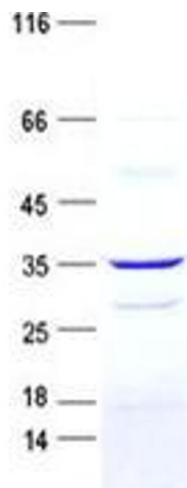
Application Details

Application Notes:	Recombinant human proteins can be used for: Native antigens for optimized antibody production Positive controls in ELISA and other antibody assays
Comment:	The tag is located at the C-terminal,N-terminal.
Restrictions:	For Research Use only

Handling

Concentration:	50 µg/mL
Buffer:	PBS, pH 7.4, 10 % glycerol.
Storage:	-80 °C
Storage Comment:	Store at -80°C. Thaw on ice, aliquot to individual single-use tubes, and then re-freeze immediately. Only 2-3 freeze thaw cycles are recommended.

Images



Western Blotting

Image 1. Validation with Western Blot