

Datasheet for ABIN5505604
C8ORF37 Protein (His tag)



[Go to Product page](#)

1 Image

Overview

| | |
|-------------------------------|--|
| Quantity: | 50 µg |
| Target: | C8ORF37 |
| Origin: | Human |
| Source: | Escherichia coli (E. coli) |
| Protein Type: | Recombinant |
| Purification tag / Conjugate: | This C8ORF37 protein is labelled with His tag. |
| Application: | Antibody Production (AbP), Standard (STD) |

Product Details

| | |
|------------------|--|
| Characteristics: | <ul style="list-style-type: none">• Recombinant human Purified recombinant protein of Human chromosome 8 open reading frame 37 (C8orf37), full length, with N-terminal HIS tag, expressed in E. coli, 50 µg (full length, N-term HIS tag) protein expressed in E.coli.• Produced with end-sequenced ORF clone |
| Purification: | Purified |
| Purity: | > 80 % as determined by SDS-PAGE and Coomassie blue staining |

Target Details

| | |
|-------------------|---|
| Target: | C8ORF37 |
| Alternative Name: | chromosome 8 open reading frame 37 (C8ORF37 Products) |
| Background: | This gene encodes a ubiquitously expressed protein of unknown function. It has high levels of mRNA expression in the brain, heart, and retina and the protein co-localizes with |

Target Details

polyglutamylated tubulin at the base of the primary cilium in human retinal pigment epithelial cells. Mutations in this gene have been associated with autosomal recessive cone-rod dystrophy (arCRD) and retinitis pigmentosa (arRP).

Molecular Weight: 23.2 kDa

NCBI Accession: [NP_808880](#)

Application Details

Application Notes: Recombinant human proteins can be used for:
Native antigens for optimized antibody production
Positive controls in ELISA and other antibody assays

Comment: The tag is located at the N-terminal.

Restrictions: For Research Use only

Handling

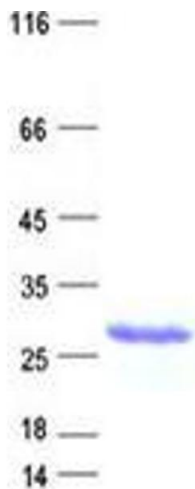
Concentration: 50 µg/mL

Buffer: 25 mM Tris, pH 8.0, 150 mM NaCl, 10 % glycerol, 1 % Sarkosyl.

Storage: -80 °C

Storage Comment: Store at -80°C. Thaw on ice, aliquot to individual single-use tubes, and then re-freeze immediately. Only 2-3 freeze thaw cycles are recommended.

Images



Western Blotting

Image 1. Validation with Western Blot