



[Go to Product page](#)

Datasheet for ABIN5505634

FCRL1 Protein (GST tag,His tag)

1 Image

Overview

Quantity:	50 µg
Target:	FCRL1
Origin:	Human
Source:	Escherichia coli (E. coli)
Protein Type:	Recombinant
Purification tag / Conjugate:	This FCRL1 protein is labelled with GST tag,His tag.
Application:	Antibody Production (AbP), Standard (STD)

Product Details

Characteristics:	<ul style="list-style-type: none">• Recombinant human Purified recombinant protein of Human Fc receptor-like 1 (FCRL1), transcript variant 1, full length, with N-terminal GST and C-terminal His tag, expressed in E. coli, 50 µg (full length, N-term GST tag, C-term His tag, transcript variant 1) protein expressed in E.coli.• Produced with end-sequenced ORF clone
------------------	---

Purification:	Purified
Purity:	> 80 % as determined by SDS-PAGE and Coomassie blue staining

Target Details

Target:	FCRL1
Alternative Name:	Fc receptor-like 1 (FCRL1 Products)
Background:	This gene encodes a member of the immunoglobulin receptor superfamily and is one of several

Target Details

Fc receptor-like glycoproteins clustered on the long arm of chromosome 1. The encoded protein contains three extracellular C2-like immunoglobulin domains, a transmembrane domain and a cytoplasmic domain with two immunoreceptor-tyrosine activation motifs. This protein may play a role in the regulation of cancer cell growth. Alternative splicing results in multiple transcript variants.

Molecular Weight: 71.7 kDa

NCBI Accession: [NP_443170](#)

Application Details

Application Notes: Recombinant human proteins can be used for:
Native antigens for optimized antibody production
Positive controls in ELISA and other antibody assays

Comment: The tag is located at the C-terminal,N-terminal.

Restrictions: For Research Use only

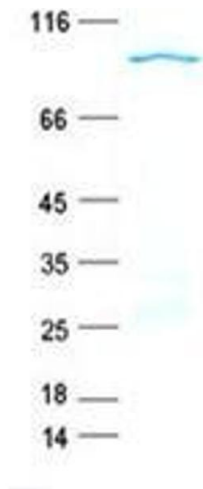
Handling

Concentration: 50 µg/mL

Buffer: 25 mM Tris, pH 8.0, 150 mM NaCl, 10 % glycerol, 1 % Sarkosyl.

Storage: -80 °C

Storage Comment: Store at -80°C. Thaw on ice, aliquot to individual single-use tubes, and then re-freeze immediately. Only 2-3 freeze thaw cycles are recommended.



Western Blotting

Image 1. Validation with Western Blot