

Datasheet for ABIN5505648

Glycogenin 1 Protein (GYG1) (His tag)**1** Image[Go to Product page](#)

Overview

Quantity:	50 µg
Target:	Glycogenin 1 (GYG1)
Origin:	Human
Source:	Escherichia coli (E. coli)
Protein Type:	Recombinant
Purification tag / Conjugate:	This Glycogenin 1 protein is labelled with His tag.
Application:	Antibody Production (AbP), Standard (STD)

Product Details

Characteristics:	<ul style="list-style-type: none">• Recombinant human Purified recombinant protein of Human glycogenin 1 (GYG1), transcript variant 3, full length, with N-terminal HIS tag, expressed in E.coli, 50 µg (full length, N-term HIS tag, transcript variant 3) protein expressed in E.coli.• Produced with end-sequenced ORF clone
Purification:	Purified
Purity:	> 80 % as determined by SDS-PAGE and Coomassie blue staining

Target Details

Target:	Glycogenin 1 (GYG1)
Alternative Name:	glycogenin 1 (GYG1 Products)
Background:	Self-glucosylates, via an inter-subunit mechanism, to form an oligosaccharide primer that serves as substrate for glycogen synthase. [UniProtKB/Swiss-Prot Function]

Target Details

Molecular Weight:	31.9 kDa
NCBI Accession:	NP_001171650
Pathways:	Cellular Glucan Metabolic Process

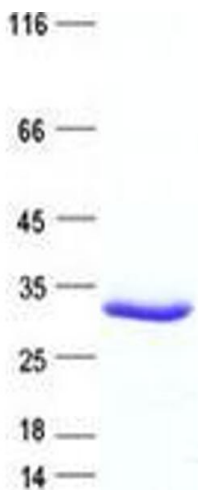
Application Details

Application Notes:	Recombinant human proteins can be used for: Native antigens for optimized antibody production Positive controls in ELISA and other antibody assays
Comment:	The tag is located at the N-terminal.
Restrictions:	For Research Use only

Handling

Concentration:	50 µg/mL
Buffer:	25 mM Tris, pH 8.0, 150 mM NaCl, 10 % glycerol, 1 % Sarkosyl.
Storage:	-80 °C
Storage Comment:	Store at -80°C. Thaw on ice, aliquot to individual single-use tubes, and then re-freeze immediately. Only 2-3 freeze thaw cycles are recommended.

Images



Western Blotting

Image 1. Validation with Western Blot