



[Go to Product page](#)

Datasheet for ABIN5505683

## IGFL1 Protein (Myc-DYKDDDDK Tag)

### 1 Image

#### Overview

Quantity:	20 µg
Target:	IGFL1
Origin:	Human
Source:	HEK-293 Cells
Protein Type:	Recombinant
Purification tag / Conjugate:	This IGFL1 protein is labelled with Myc-DYKDDDDK Tag.
Application:	Antibody Production (AbP), Standard (STD)

#### Product Details

- Characteristics:
- Recombinant human IGFL1 protein expressed in HEK293 cells.
  - Produced with end-sequenced ORF clone

Purity: > 80 % as determined by SDS-PAGE and Coomassie blue staining

#### Target Details

Target: IGFL1

Alternative Name: IGFL1 ([IGFL1 Products](#))

Background: The protein encoded by this gene is a member of the insulin-like growth factor family of signaling molecules. The encoded protein is synthesized as a precursor protein and is proteolytically cleaved to form a secreted mature peptide. The mature peptide binds to a receptor, which in mouse was found on the cell surface of T cells. Increased expression of this gene may be linked to psoriasis.

## Target Details

Molecular Weight: 12.2 kDa

NCBI Accession: [NP\\_940943](#)

## Application Details

Application Notes: Recombinant human proteins can be used for:  
Native antigens for optimized antibody production  
Positive controls in ELISA and other antibody assays

Comment: The tag is located at the C-terminal.

Restrictions: For Research Use only

## Handling

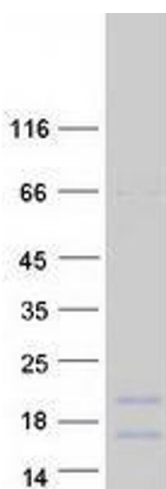
Concentration: 50 µg/mL

Buffer: 25 mM Tris.HCl, pH 7.3, 100 mM glycine, 10 % glycerol.

Storage: -80 °C

Storage Comment: Store at -80°C. Thaw on ice, aliquot to individual single-use tubes, and then re-freeze immediately. Only 2-3 freeze thaw cycles are recommended.

## Images



### Western Blotting

**Image 1.** Validation with Western Blot