

Datasheet for ABIN5505690

**INHBB Protein****1** Image[Go to Product page](#)

## Overview

Quantity:	5 µg
Target:	INHBB
Origin:	Human
Source:	Hi-5 Cells
Protein Type:	Recombinant
Biological Activity:	Active
Application:	Antibody Production (AbP), Functional Studies (Func), Protein Interaction (PI), Standard (STD)

## Product Details

Specificity:	Optimal preservation of protein structure, post-translational modifications and functions.
Characteristics:	<ul style="list-style-type: none"><li>• Recombinant human Inhibin beta B chain (INHBB) protein expressed in Hi-5 insect cells.</li><li>• Produced with end-sequenced ORF clone</li><li>• Tested for bioactivity.</li></ul>
Purity:	> 95 % as determined by SDS-PAGE and Coomassie blue staining
Endotoxin Level:	Endotoxin level is <0.1 ng/µg of protein (<1EU/µg).
Biological Activity Comment:	ED50 was determined by its ability to inhibit the proliferation of murine MPC-11 cells is less than or equal to 2.0 ng/ml, corresponding to a specific activity of > 5 x 10 <sup>5</sup> units/mg.

## Target Details

Target:	INHBB
Alternative Name:	Inhibin beta B chain (INHBB) ( <a href="#">INHBB Products</a> )

## Target Details

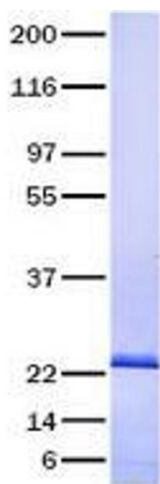
Background:	Inhibins and activins inhibit and activate, respectively, the secretion of follitropin by the pituitary gland. Inhibins/activins are involved in regulating a number of diverse functions such as hypothalamic and pituitary hormone secretion, gonadal hormone secretion, germ cell development and maturation, erythroid differentiation, insulin secretion, nerve cell survival, embryonic axial development or bone growth, depending on their subunit composition. Inhibins appear to oppose the functions of activins. [UniProtKB/Swiss-Prot Function]
Molecular Weight:	25.6 kDa
NCBI Accession:	<a href="#">NP_002184</a>
Pathways:	<a href="#">Peptide Hormone Metabolism</a> , <a href="#">Hormone Activity</a> , <a href="#">Negative Regulation of Hormone Secretion</a>

## Application Details

Application Notes:	Recombinant human proteins can be used for: Native antigens for optimized antibody production Positive controls in ELISA and other antibody assays Protein-protein interaction In vitro biochemical assays and cell-based functional assays
Restrictions:	For Research Use only

## Handling

Buffer:	Lyophilized from a 0.2 µM filtered solution of 20 mM phosphate buffer, 100 mM NaCl, pH 7.2
Handling Advice:	Resuspend the protein in the desired concentration in proper buffer
Storage:	-80 °C
Storage Comment:	Store at -80°C. Thaw on ice, aliquot to individual single-use tubes, and then re-freeze immediately. Only 2-3 freeze thaw cycles are recommended.



Western Blotting

**Image 1.** Validation with Western Blot