

Datasheet for ABIN5505691

INTS6 Protein (His tag)[Go to Product page](#)**1** Image

Overview

Quantity:	50 µg
Target:	INTS6
Origin:	Human
Source:	Escherichia coli (E. coli)
Protein Type:	Recombinant
Purification tag / Conjugate:	This INTS6 protein is labelled with His tag.
Application:	Antibody Production (AbP), Standard (STD)

Product Details

Characteristics:	<ul style="list-style-type: none">• Recombinant human Purified recombinant protein of Human integrator complex subunit 6 (INTS6), transcript variant 3, full length, with N-terminal HIS tag, expressed in E.coli, 50 µg (full length, N-term HIS tag, transcript variant 3) protein expressed in E.coli.• Produced with end-sequenced ORF clone
Purification:	Purified
Purity:	> 80 % as determined by SDS-PAGE and Coomassie blue staining

Target Details

Target:	INTS6
Alternative Name:	integrator complex subunit 6 (INTS6 Products)
Background:	DEAD box proteins, characterized by the conserved motif Asp-Glu-Ala-Asp (DEAD), are putative RNA helicases. The protein encoded by this gene is a DEAD box protein that is part of a

Target Details

complex that interacts with the C-terminus of RNA polymerase II and is involved in 3' end processing of snRNAs. In addition, this gene is a candidate tumor suppressor and is located in the critical region of loss of heterozygosity (LOH). Multiple transcript variants encoding different isoforms have been found for this gene.

Molecular Weight:	12.7 kDa
NCBI Accession:	NP_001035027

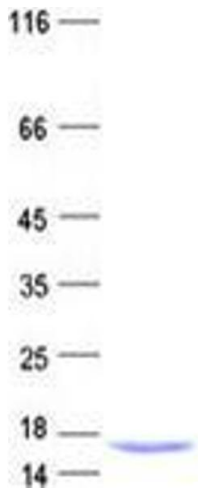
Application Details

Application Notes:	Recombinant human proteins can be used for: Native antigens for optimized antibody production Positive controls in ELISA and other antibody assays
Comment:	The tag is located at the N-terminal.
Restrictions:	For Research Use only

Handling

Concentration:	50 µg/mL
Buffer:	25 mM Tris, pH 8.0, 150 mM NaCl, 10 % glycerol, 1 % Sarkosyl.
Storage:	-80 °C
Storage Comment:	Store at -80°C. Thaw on ice, aliquot to individual single-use tubes, and then re-freeze immediately. Only 2-3 freeze thaw cycles are recommended.

Images



Western Blotting

Image 1. Validation with Western Blot