

Datasheet for ABIN5505710  
**KRBA2 Protein (His tag)**[Go to Product page](#)

## 1 Image

## Overview

Quantity:	50 µg
Target:	KRBA2
Origin:	Human
Source:	Escherichia coli (E. coli)
Protein Type:	Recombinant
Purification tag / Conjugate:	This KRBA2 protein is labelled with His tag.
Application:	Antibody Production (AbP), Standard (STD)

## Product Details

Characteristics:	<ul style="list-style-type: none"><li>• Recombinant human Purified recombinant protein of Human KRAB-A domain containing 2 (KRBA2), full length, with N-terminal HIS tag, expressed in E.coli, 50 µg (full length, N-term HIS tag) protein expressed in E.coli.</li><li>• Produced with end-sequenced ORF clone</li></ul>
Purification:	Purified
Purity:	> 80 % as determined by SDS-PAGE and Coomassie blue staining

## Target Details

Target:	KRBA2
Alternative Name:	KRAB-A domain containing 2 ( <a href="#">KRBA2 Products</a> )
Molecular Weight:	56 kDa
NCBI Accession:	<a href="#">NP_998762</a>

## Application Details

Application Notes: Recombinant human proteins can be used for:  
Native antigens for optimized antibody production  
Positive controls in ELISA and other antibody assays

Comment: The tag is located at the N-terminal.

Restrictions: For Research Use only

## Handling

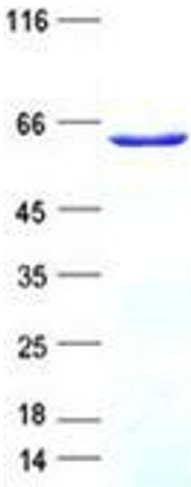
Concentration: 50 µg/mL

Buffer: 25 mM Tris, pH 8.0, 150 mM NaCl, 10 % glycerol, 1 % Sarkosyl.

Storage: -80 °C

Storage Comment: Store at -80°C. Thaw on ice, aliquot to individual single-use tubes, and then re-freeze immediately. Only 2-3 freeze thaw cycles are recommended.

## Images



### Western Blotting

**Image 1.** Validation with Western Blot