



[Go to Product page](#)

Datasheet for ABIN5505723

## MRPS23 Protein (DYKDDDDK Tag)

### 1 Image

#### Overview

Quantity:	20 µg
Target:	MRPS23
Origin:	Human
Source:	Insect cells (Sf9)
Protein Type:	Recombinant
Purification tag / Conjugate:	This MRPS23 protein is labelled with DYKDDDDK Tag.
Application:	Antibody Production (AbP), Standard (STD)

#### Product Details

Characteristics:	<ul style="list-style-type: none"><li>• Recombinant human Purified recombinant protein of Human mitochondrial ribosomal protein S23 (MRPS23), nuclear gene encoding mitochondrial protein, full length, with C-terminal DDK tag, expressed in sf9, 20 µg (full length, C-term DDK tag) protein expressed in Sf9 cells.</li><li>• Produced with end-sequenced ORF clone</li></ul>
------------------	--

Purification:	Purified
Purity:	> 80 % as determined by SDS-PAGE and Coomassie blue staining

#### Target Details

Target:	MRPS23
Alternative Name:	mitochondrial ribosomal protein S23 ( <a href="#">MRPS23 Products</a> )
Background:	Mammalian mitochondrial ribosomal proteins are encoded by nuclear genes and help in protein

## Target Details

---

synthesis within the mitochondrion. Mitochondrial ribosomes (mitoribosomes) consist of a small 28S subunit and a large 39S subunit. They have an estimated 75 % protein to rRNA composition compared to prokaryotic ribosomes, where this ratio is reversed. Another difference between mammalian mitoribosomes and prokaryotic ribosomes is that the latter contain a 5S rRNA. Among different species, the proteins comprising the mitoribosome differ greatly in sequence, and sometimes in biochemical properties, which prevents easy recognition by sequence homology. This gene encodes a 28S subunit protein. A pseudogene corresponding to this gene is found on chromosome 7p.

---

Molecular Weight: 21.6 kDa

---

NCBI Accession: [NP\\_057154](#)

## Application Details

---

Application Notes: Recombinant human proteins can be used for:  
Native antigens for optimized antibody production  
Positive controls in ELISA and other antibody assays

---

Comment: The tag is located at the C-terminal.

---

Restrictions: For Research Use only

## Handling

---

Concentration: 50 µg/mL

---

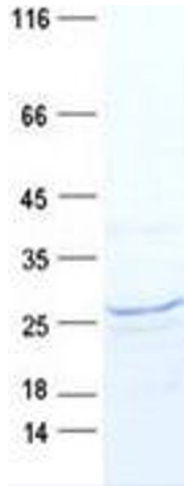
Buffer: 50 mM Tris-HCl, pH 8.0, 100 mM glycine, 10 % glycerol

---

Storage: -80 °C

---

Storage Comment: Store at -80°C. Thaw on ice, aliquot to individual single-use tubes, and then re-freeze immediately. Only 2-3 freeze thaw cycles are recommended.



### Western Blotting

**Image 1.** Validation with Western Blot