

Datasheet for ABIN5505756

RASGRP3 Protein (GST tag,His tag)[Go to Product page](#)**1** Image

Overview

Quantity:	50 µg
Target:	RASGRP3
Origin:	Human
Source:	Escherichia coli (E. coli)
Protein Type:	Recombinant
Purification tag / Conjugate:	This RASGRP3 protein is labelled with GST tag,His tag.
Application:	Antibody Production (AbP), Standard (STD)

Product Details

Characteristics:	<ul style="list-style-type: none">• Recombinant human Purified recombinant protein of Human RAS guanyl releasing protein 3 (calcium and DAG-regulated) (RASGRP3), transcript variant 2, full length, with N-terminal GST and C-terminal His tag, expressed in E. coli, 50 µg (full length, N-term GST tag, C-term His tag, transcript variant 2) protein expressed in E.coli.• Produced with end-sequenced ORF clone
Purification:	Purified
Purity:	> 80 % as determined by SDS-PAGE and Coomassie blue staining

Target Details

Target:	RASGRP3
Alternative Name:	RAS guanyl releasing protein 3 (RASGRP3 Products)
Background:	Members of the RAS (see HRAS MIM 190020) subfamily of GTPases function in signal

Target Details

transduction as GTP/GDP-regulated switches that cycle between inactive GDP- and active GTP-bound states. Guanine nucleotide exchange factors (GEFs), such as RASGRP3, serve as RAS activators by promoting acquisition of GTP to maintain the active GTP-bound state and are the key link between cell surface receptors and RAS activation (Rebhun et al., 2000 [PubMed 10934204]).[supplied by OMIM, Mar 2008].

Molecular Weight: 104.2 kDa

NCBI Accession: [NP_733772](#)

Application Details

Application Notes: Recombinant human proteins can be used for:
Native antigens for optimized antibody production
Positive controls in ELISA and other antibody assays

Comment: The tag is located at the C-terminal,N-terminal.

Restrictions: For Research Use only

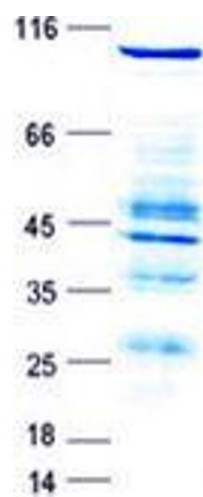
Handling

Concentration: 50 µg/mL

Buffer: 25 mM Tris, pH 8.0, 150 mM NaCl, 10 % glycerol, 1 % Sarkosyl.

Storage: -80 °C

Storage Comment: Store at -80°C. Thaw on ice, aliquot to individual single-use tubes, and then re-freeze immediately. Only 2-3 freeze thaw cycles are recommended.



Western Blotting

Image 1. Validation with Western Blot