

Datasheet for ABIN5505759

**Ret Proto-Oncogene Protein (RET) (DYKDDDDK-His Tag)**[Go to Product page](#)**1** Image

## Overview

Quantity:	20 µg
Target:	Ret Proto-Oncogene (RET)
Origin:	Human
Source:	HEK-293 Cells
Protein Type:	Recombinant
Purification tag / Conjugate:	This Ret Proto-Oncogene protein is labelled with DYKDDDDK-His Tag.
Application:	Antibody Production (AbP), Standard (STD)

## Product Details

Characteristics:	<ul style="list-style-type: none"><li>• Recombinant human Purified recombinant protein of human ret proto-oncogene (RET), with C-terminal DDK/His tag, expressed in human cells, 20 µg (C-term DDK/His tag) protein expressed in Human 293HEK cells.</li><li>• Produced with end-sequenced ORF clone</li></ul>
Purification:	Purified
Purity:	> 80 % as determined by SDS-PAGE and Coomassie blue staining

## Target Details

Target:	Ret Proto-Oncogene (RET)
Alternative Name:	ret proto-oncogene ( <a href="#">RET Products</a> )
Background:	This gene, a member of the cadherin superfamily, encodes one of the receptor tyrosine kinases, which are cell-surface molecules that transduce signals for cell growth and differentiation. This

## Target Details

---

gene plays a crucial role in neural crest development, and it can undergo oncogenic activation in vivo and in vitro by cytogenetic rearrangement. Mutations in this gene are associated with the disorders multiple endocrine neoplasia, type IIA, multiple endocrine neoplasia, type IIB, Hirschsprung disease, and medullary thyroid carcinoma. Two transcript variants encoding different isoforms have been found for this gene. Additional transcript variants have been described but their biological validity has not been confirmed.

Molecular Weight: 70.5 kDa

NCBI Accession: [NP\\_066124](#)

Pathways: [RTK Signaling](#), [Dopaminergic Neurogenesis](#), [Regulation of Cell Size](#), [Tube Formation](#)

## Application Details

---

Application Notes: Recombinant human proteins can be used for:  
Native antigens for optimized antibody production  
Positive controls in ELISA and other antibody assays

Comment: The tag is located at the C-terminal.

Restrictions: For Research Use only

## Handling

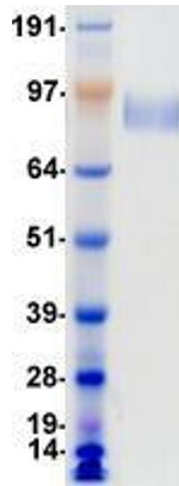
---

Concentration: 50 µg/mL

Buffer: 1 x PBS, pH 7.4, 10 % glycerol.

Storage: -80 °C

Storage Comment: Store at -80°C. Thaw on ice, aliquot to individual single-use tubes, and then re-freeze immediately. Only 2-3 freeze thaw cycles are recommended.



### Western Blotting

**Image 1.** Validation with Western Blot