

Datasheet for ABIN5505762
ARHGEF28 Protein (His tag)



[Go to Product page](#)

1 Image

Overview

Quantity:	50 µg
Target:	ARHGEF28
Origin:	Human
Source:	Escherichia coli (E. coli)
Protein Type:	Recombinant
Purification tag / Conjugate:	This ARHGEF28 protein is labelled with His tag.
Application:	Antibody Production (AbP), Standard (STD)

Product Details

Characteristics:	<ul style="list-style-type: none">• Recombinant human Purified recombinant protein of Human Rho guanine nucleotide exchange factor (GEF) 16 (ARHGEF16), full length, with N-terminal HIS tag, expressed in E.coli, 50 µg (full length, N-term HIS tag) protein expressed in E.coli.• Produced with end-sequenced ORF clone
------------------	---

Purification:	Purified
Purity:	> 80 % as determined by SDS-PAGE and Coomassie blue staining

Target Details

Target:	ARHGEF28
Alternative Name:	Rho guanine nucleotide exchange factor (ARHGEF28 Products)
Background:	Although the specific function of this protein is not known yet, it is thought to be involved in protein-protein and protein-lipid interactions.

Target Details

Molecular Weight: 48.6 kDa

NCBI Accession: [NP_055263](#)

Application Details

Application Notes: Recombinant human proteins can be used for:
Native antigens for optimized antibody production
Positive controls in ELISA and other antibody assays

Comment: The tag is located at the N-terminal.

Restrictions: For Research Use only

Handling

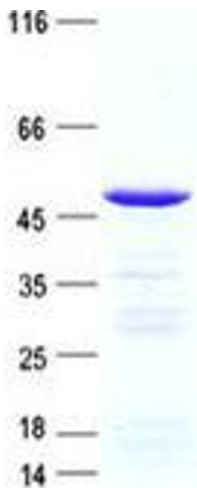
Concentration: 50 µg/mL

Buffer: 25 mM Tris, pH 8.0, 150 mM NaCl, 10 % glycerol, 1 % Sarkosyl.

Storage: -80 °C

Storage Comment: Store at -80°C. Thaw on ice, aliquot to individual single-use tubes, and then re-freeze immediately. Only 2-3 freeze thaw cycles are recommended.

Images



Western Blotting

Image 1. Validation with Western Blot