

Datasheet for ABIN5505779  
**Syntabulin Protein (His tag)**[Go to Product page](#)

## 1 Image

## Overview

Quantity:	50 µg
Target:	Syntabulin (SYBU)
Origin:	Human
Source:	Escherichia coli (E. coli)
Protein Type:	Recombinant
Purification tag / Conjugate:	This Syntabulin protein is labelled with His tag.
Application:	Antibody Production (AbP), Standard (STD)

## Product Details

Characteristics:	<ul style="list-style-type: none"><li>• Recombinant human Purified recombinant protein of Human syntabulin (syntaxin-interacting) (SYBU), transcript variant 5, full length, with N-terminal HIS tag, expressed in E. coli, 50 µg (full length, N-term HIS tag, transcript variant 5) protein expressed in E.coli.</li><li>• Produced with end-sequenced ORF clone</li></ul>
Purification:	Purified
Purity:	> 80 % as determined by SDS-PAGE and Coomassie blue staining

## Target Details

Target:	Syntabulin (SYBU)
Alternative Name:	syntabulin ( <a href="#">SYBU Products</a> )
Background:	Syntabulin/GOLSYN is part of a kinesin motor-adaptor complex that is critical for the anterograde axonal transport of active zone components and contributes to activity-dependent

Target Details

	presynaptic assembly during neuronal development (Cai et al., 2007 [PubMed 17611281]).[supplied by OMIM, Mar 2008].
Molecular Weight:	72.2 kDa
NCBI Accession:	<a href="#">NP_001093222</a>

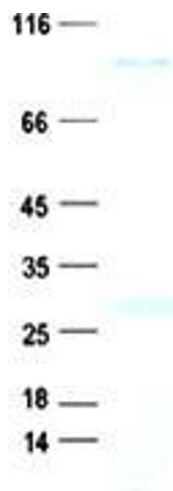
Application Details

Application Notes:	Recombinant human proteins can be used for: Native antigens for optimized antibody production Positive controls in ELISA and other antibody assays
Comment:	The tag is located at the N-terminal.
Restrictions:	For Research Use only

Handling

Concentration:	50 µg/mL
Buffer:	25 mM Tris, pH 8.0, 150 mM NaCl, 10 % glycerol, 1 % Sarkosyl.
Storage:	-80 °C
Storage Comment:	Store at -80°C. Thaw on ice, aliquot to individual single-use tubes, and then re-freeze immediately. Only 2-3 freeze thaw cycles are recommended.

Images



**Western Blotting**

**Image 1.** Validation with Western Blot