



[Go to Product page](#)

Datasheet for ABIN5505797

## USP46 Protein (GST tag,His tag)

### 1 Image

#### Overview

Quantity:	50 µg
Target:	USP46
Origin:	Human
Source:	Escherichia coli (E. coli)
Protein Type:	Recombinant
Purification tag / Conjugate:	This USP46 protein is labelled with GST tag,His tag.
Application:	Antibody Production (AbP), Standard (STD)

#### Product Details

Characteristics:	<ul style="list-style-type: none"><li>Recombinant human Purified recombinant protein of Human ubiquitin specific peptidase 46 (USP46), transcript variant 1, full length, with N-terminal GST and C-terminal His tag, expressed in E. coli, 50 µg (full length, N-term GST tag, C-term His tag, transcript variant 1) protein expressed in E.coli.</li><li>Produced with end-sequenced ORF clone</li></ul>
------------------	--

Purification:	Purified
Purity:	> 80 % as determined by SDS-PAGE and Coomassie blue staining

#### Target Details

Target:	USP46
Alternative Name:	ubiquitin specific peptidase 46 ( <a href="#">USP46 Products</a> )
Background:	Modification of cellular proteins by ubiquitin is an essential regulatory mechanism controlled by

## Target Details

the coordinated action of multiple ubiquitin-conjugating and deubiquitinating enzymes. USP46 belongs to a large family of cysteine proteases that function as deubiquitinating enzymes (Quesada et al., 2004 [PubMed 14715245]).[supplied by OMIM, Jun 2009].

Molecular Weight: 68.3 kDa

NCBI Accession: [NP\\_073743](#)

## Application Details

Application Notes: Recombinant human proteins can be used for:  
Native antigens for optimized antibody production  
Positive controls in ELISA and other antibody assays

Comment: The tag is located at the C-terminal,N-terminal.

Restrictions: For Research Use only

## Handling

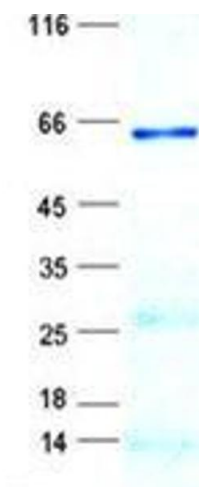
Concentration: 50 µg/mL

Buffer: 25 mM Tris, pH 8.0, 150 mM NaCl, 10 % glycerol, 1 % Sarkosyl.

Storage: -80 °C

Storage Comment: Store at -80°C. Thaw on ice, aliquot to individual single-use tubes, and then re-freeze immediately. Only 2-3 freeze thaw cycles are recommended.

## Images



### Western Blotting

**Image 1.** Validation with Western Blot