

Datasheet for ABIN5509294

**EGF Protein****2** Images[Go to Product page](#)

## Overview

|                      |                            |
|----------------------|----------------------------|
| Quantity:            | 500 µg                     |
| Target:              | EGF                        |
| Origin:              | Human                      |
| Source:              | Escherichia coli (E. coli) |
| Protein Type:        | Recombinant                |
| Biological Activity: | Active                     |
| Application:         | Functional Studies (Func)  |

## Product Details

|                  |                                     |
|------------------|-------------------------------------|
| Characteristics: | Recombinant Human EGF               |
| Purity:          | >95 % as determined by SDS-PAGE     |
| Endotoxin Level: | < 1.0 EU of endotoxin/µg of protein |

## Target Details

|                   |  |
|-------------------|--|
| Target:           | EGF  |
| Alternative Name: | EGF ( <a href="#">EGF Products</a> )   |
| Molecular Weight: | 6,5  |
| Gene ID:          | 1950   |
| UniProt:          | <a href="#">P01133</a>   |
| Pathways:         | <a href="#">NF-kappaB Signaling</a> , <a href="#">RTK Signaling</a> , <a href="#">Fc-epsilon Receptor Signaling Pathway</a> , <a href="#">EGFR Signaling</a> |

## Target Details

Pathway, Neurotrophin Signaling Pathway, Regulation of Carbohydrate Metabolic Process, Hepatitis C, Protein targeting to Nucleus, Interaction of EGFR with phospholipase C-gamma, Thromboxane A2 Receptor Signaling, EGFR Downregulation

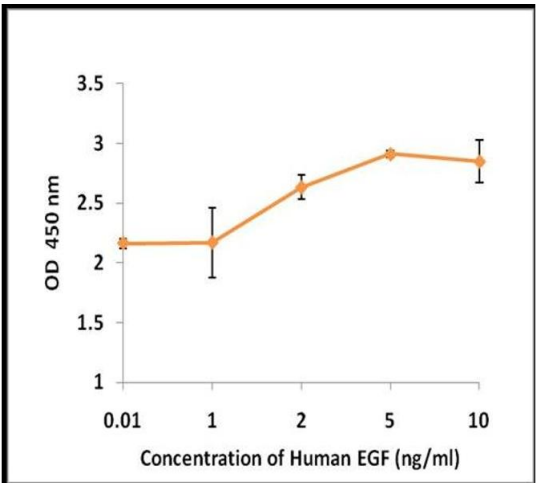
## Application Details

|                    |  |
|--------------------|--|
| Application Notes: | Optimal working dilution should be determined by the investigator. |
| Restrictions:      | For Research Use only  |

## Handling

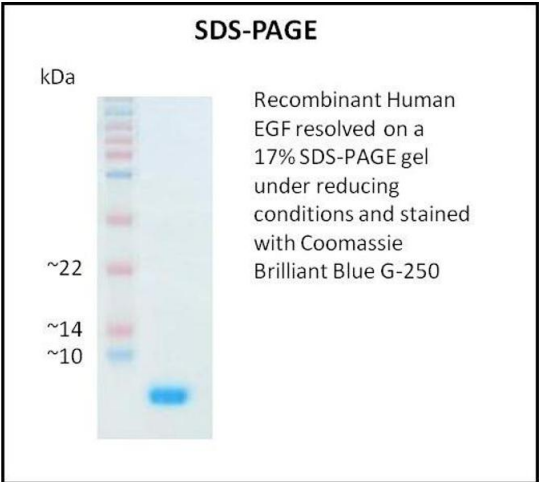
|                  |   |
|------------------|---|
| Format:          | Lyophilized   |
| Reconstitution:  | A quick spin of the vial followed by reconstitution in sterile distilled water to a concentration not less than 0.1 mg/mL is recommended. Please note, filter sterilization is a must following reconstitution. This solution can then be diluted into other buffers.   |
| Storage:         | 4 °C,-20 °C   |
| Storage Comment: | The lyophilized protein is stable for at least one year from date of receipt at -70°C. Upon reconstitution, this cytokine can be stored in working aliquots at 2° - 8°C for one month, or at -20°C for six months, with a carrier protein without detectable loss of activity. Avoid repeated freeze/thaw cycles. |

## Images



### Activity Assay

Image 1.



**SDS-PAGE**

**Image 2.**