

Datasheet for ABIN5509313

Growth Hormone 1 Protein (GH1)[Go to Product page](#)**1** Image

Overview

Quantity:	50 µg
Target:	Growth Hormone 1 (GH1)
Origin:	Mouse
Source:	Escherichia coli (E. coli)
Protein Type:	Recombinant
Biological Activity:	Active
Application:	Functional Studies (Func)

Product Details

Characteristics:	Recombinant Mouse GH1
Purity:	>95 % as determined by SDS-PAGE
Endotoxin Level:	< 1.0 EU of endotoxin/µg of protein

Target Details

Target:	Growth Hormone 1 (GH1)
Alternative Name:	GH1 (GH1 Products)
Molecular Weight:	22
Gene ID:	14599
UniProt:	P06880
Pathways:	NF-kappaB Signaling , JAK-STAT Signaling , Intracellular Steroid Hormone Receptor Signaling

Target Details

[Pathway](#), [Peptide Hormone Metabolism](#), [Regulation of Intracellular Steroid Hormone Receptor Signaling](#), [Regulation of Hormone Metabolic Process](#), [Response to Growth Hormone Stimulus](#), [Regulation of Hormone Biosynthetic Process](#)

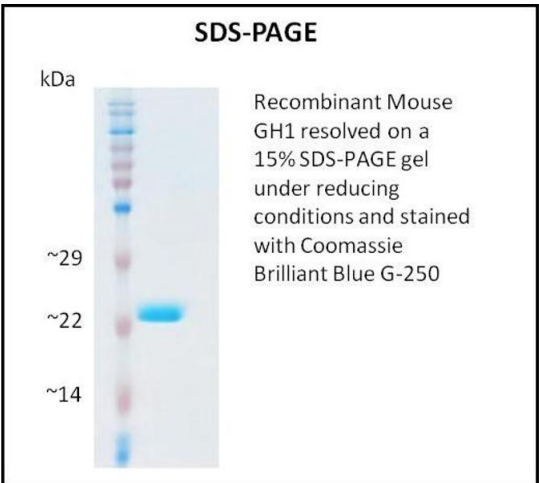
Application Details

Application Notes:	Optimal working dilution should be determined by the investigator.
Restrictions:	For Research Use only

Handling

Format:	Lyophilized
Reconstitution:	A quick spin of the vial followed by reconstitution in sterile distilled water to a concentration not less than 0.1 mg/mL is recommended. Please note, filter sterilization is a must following reconstitution. This solution can then be diluted into other buffers.
Storage:	4 °C,-20 °C
Storage Comment:	The lyophilized protein is stable for at least one year from date of receipt at -70°C. Upon reconstitution, this cytokine can be stored in working aliquots at 2° - 8°C for one month, or at -20°C for six months, with a carrier protein without detectable loss of activity. Avoid repeated freeze/thaw cycles.

Images



SDS-PAGE

Image 1.