

Datasheet for ABIN5509368

CCL13 Protein**2** Images[Go to Product page](#)

Overview

Quantity:	25 µg
Target:	CCL13
Origin:	Human
Source:	Escherichia coli (E. coli)
Protein Type:	Recombinant
Biological Activity:	Active
Application:	Functional Studies (Func)

Product Details

Characteristics:	Recombinant Human MCP-4 (CCL13)
Purity:	>95 % as determined by SDS-PAGE
Endotoxin Level:	< 1.0 EU of endotoxin/µg of protein

Target Details

Target:	CCL13
Alternative Name:	MCP-4 (CCL13) (CCL13 Products)
Molecular Weight:	9
Gene ID:	6357
UniProt:	Q99616
Pathways:	Regulation of Systemic Arterial Blood Pressure by Hormones, The Global Phosphorylation

Target Details

Landscape of SARS-CoV-2 Infection

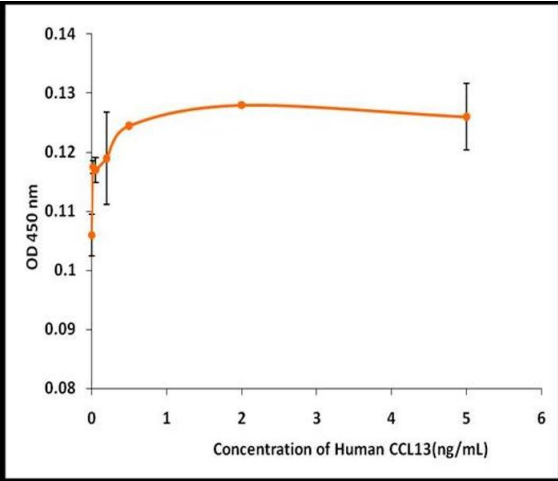
Application Details

Application Notes:	Optimal working dilution should be determined by the investigator.
Restrictions:	For Research Use only

Handling

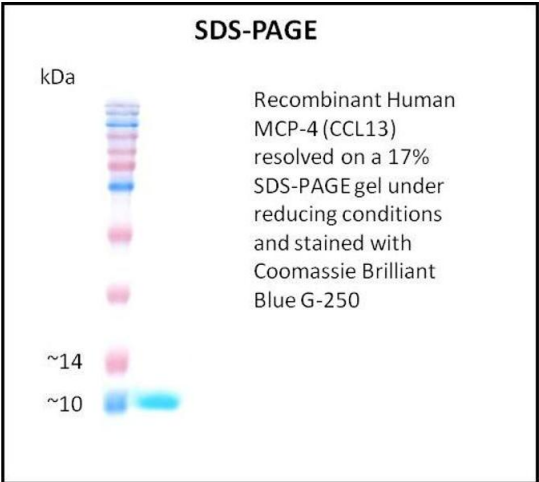
Format:	Lyophilized
Reconstitution:	A quick spin of the vial followed by reconstitution in sterile distilled water to a concentration not less than 0.1 mg/mL is recommended. Please note, filter sterilization is a must following reconstitution. This solution can then be diluted into other buffers.
Storage:	4 °C, -20 °C
Storage Comment:	The lyophilized protein is stable for at least one year from date of receipt at -70°C. Upon reconstitution, this cytokine can be stored in working aliquots at 2° - 8°C for one month, or at -20°C for six months, with a carrier protein without detectable loss of activity. Avoid repeated freeze/thaw cycles.

Images



Activity Assay

Image 1.



SDS-PAGE

Image 2.