



[Go to Product page](#)

Datasheet for ABIN5509381

## PTH Protein

### 2 Images

#### Overview

Quantity:	100 µg
Target:	PTH
Origin:	Human
Source:	Escherichia coli (E. coli)
Protein Type:	Recombinant
Biological Activity:	Active
Application:	Functional Studies (Func)

#### Product Details

Characteristics:	Recombinant Human PTH
Purity:	>95 % as determined by SDS-PAGE
Endotoxin Level:	< 1.0 EU of endotoxin/µg of protein

#### Target Details

Target:	PTH
Alternative Name:	PTH ( <a href="#">PTH Products</a> )
Target Type:	Hormone
Molecular Weight:	9
Gene ID:	5741
UniProt:	<a href="#">P01270</a>

## Target Details

Pathways: [cAMP Metabolic Process](#), [Regulation of Carbohydrate Metabolic Process](#)

## Application Details

Application Notes: Optimal working dilution should be determined by the investigator.

Restrictions: For Research Use only

## Handling

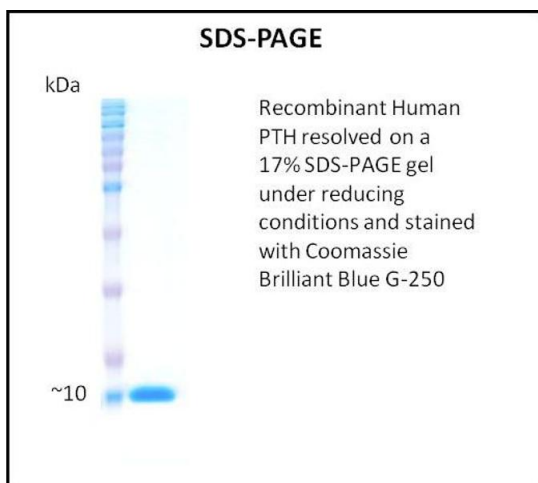
Format: Lyophilized

Reconstitution: A quick spin of the vial followed by reconstitution in sterile distilled water to a concentration not less than 0.1 mg/mL is recommended. Please note, filter sterilization is a must following reconstitution. This solution can then be diluted into other buffers.

Storage: 4 °C, -20 °C

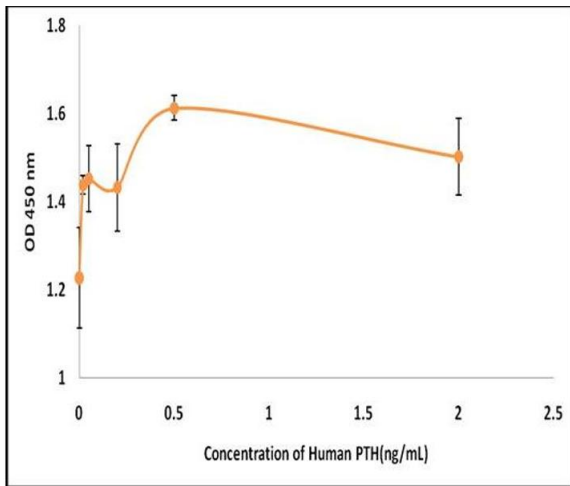
Storage Comment: The lyophilized protein is stable for at least one year from date of receipt at -70°C. Upon reconstitution, this cytokine can be stored in working aliquots at 2° - 8°C for one month, or at -20°C for six months, with a carrier protein without detectable loss of activity. Avoid repeated freeze/thaw cycles.

## Images



### SDS-PAGE

**Image 1.**



### Activity Assay

Image 2.