

Datasheet for ABIN5509432

**Midkine Protein****2** Images[Go to Product page](#)

## Overview

Quantity:	20 µg
Target:	Midkine (MDK)
Origin:	Human
Source:	Escherichia coli (E. coli)
Protein Type:	Recombinant
Biological Activity:	Active
Application:	Functional Studies (Func)

## Product Details

Characteristics:	Recombinant Human Midkine (NEGF2)
Purity:	>95 % as determined by SDS-PAGE
Endotoxin Level:	< 1.0 EU of endotoxin/µg of protein

## Target Details

Target:	Midkine (MDK)
Alternative Name:	Midkine (NEGF2) ( <a href="#">MDK Products</a> )
Molecular Weight:	14
Gene ID:	4192
UniProt:	<a href="#">P21741</a>
Pathways:	<a href="#">RTK Signaling</a> , <a href="#">M Phase</a> , <a href="#">Skeletal Muscle Fiber Development</a>

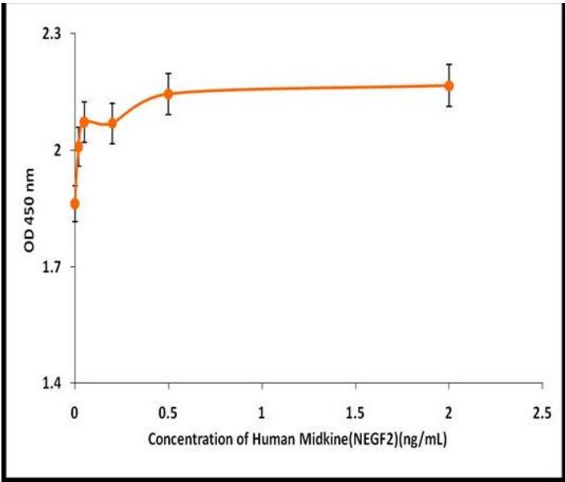
Application Details

Application Notes:	Optimal working dilution should be determined by the investigator.
Restrictions:	For Research Use only

Handling

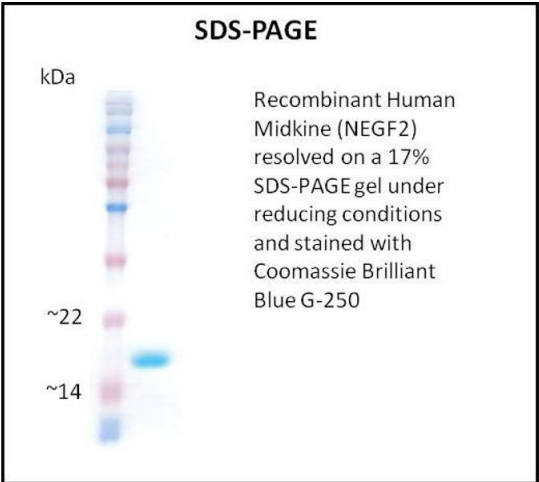
Format:	Lyophilized
Reconstitution:	A quick spin of the vial followed by reconstitution in sterile distilled water to a concentration not less than 0.1 mg/mL is recommended. Please note, filter sterilization is a must following reconstitution. This solution can then be diluted into other buffers.
Storage:	4 °C,-20 °C
Storage Comment:	The lyophilized protein is stable for at least one year from date of receipt at -70°C. Upon reconstitution, this cytokine can be stored in working aliquots at 2° - 8°C for one month, or at -20°C for six months, with a carrier protein without detectable loss of activity. Avoid repeated freeze/thaw cycles.

Images



Activity Assay

Image 1.



**SDS-PAGE**

**Image 2.**