

Datasheet for ABIN5509446

GRO gamma Protein**1** Image[Go to Product page](#)

Overview

Quantity:	20 µg
Target:	GRO gamma
Origin:	Mouse
Source:	Escherichia coli (E. coli)
Protein Type:	Recombinant
Biological Activity:	Active
Application:	Functional Studies (Func)

Product Details

Characteristics:	Recombinant Mouse GRO gamma (CXCL3)
Purity:	>95 % as determined by SDS-PAGE
Endotoxin Level:	< 1.0 EU of endotoxin/µg of protein

Target Details

Target:	GRO gamma
Alternative Name:	GRO gamma (CXCL3) (GRO gamma Products)
Molecular Weight:	8
Gene ID:	330122
UniProt:	Q6W5C0

Application Details

Application Notes: Optimal working dilution should be determined by the investigator.

Restrictions: For Research Use only

Handling

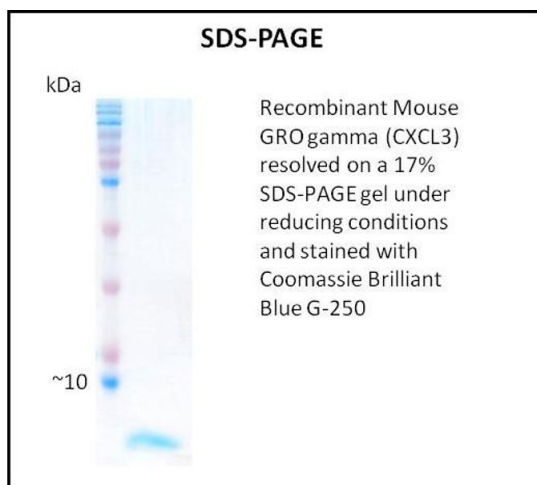
Format: Lyophilized

Reconstitution: A quick spin of the vial followed by reconstitution in sterile distilled water to a concentration not less than 0.1 mg/mL is recommended. Please note, filter sterilization is a must following reconstitution. This solution can then be diluted into other buffers.

Storage: 4 °C, -20 °C

Storage Comment: The lyophilized protein is stable for at least one year from date of receipt at -70°C. Upon reconstitution, this cytokine can be stored in working aliquots at 2° - 8°C for one month, or at -20°C for six months, with a carrier protein without detectable loss of activity. Avoid repeated freeze/thaw cycles.

Images



SDS-PAGE

Image 1.