

Datasheet for ABIN5509497  
**Amphiregulin Protein (AREG)**

## 3 Images

[Go to Product page](#)

## Overview

Quantity:	15 µg
Target:	Amphiregulin (AREG)
Origin:	Human
Source:	Escherichia coli (E. coli)
Protein Type:	Recombinant
Biological Activity:	Active
Application:	Functional Studies (Func)

## Product Details

Characteristics:	Recombinant Human AREG
Purity:	>95 % as determined by SDS-PAGE
Endotoxin Level:	< 1.0 EU of endotoxin/µg of protein

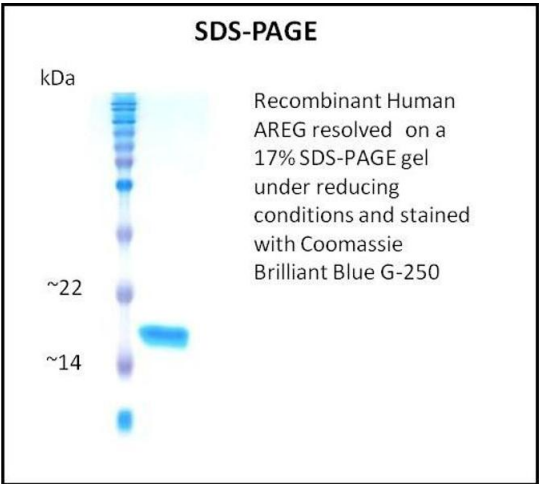
## Target Details

Target:	Amphiregulin (AREG)
Alternative Name:	AREG ( <a href="#">AREG Products</a> )
Molecular Weight:	11,5
Gene ID:	374
UniProt:	<a href="#">P15514</a>
Pathways:	<a href="#">RTK Signaling, EGFR Signaling Pathway</a>

## Application Details

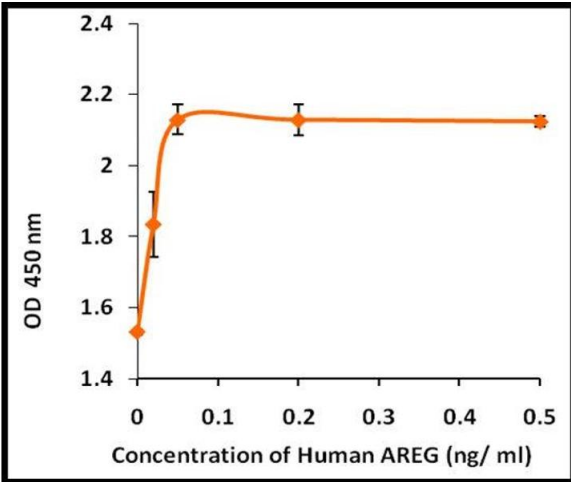
Application Notes:	Optimal working dilution should be determined by the investigator.
Restrictions:	For Research Use only
Handling	
Format:	Lyophilized
Reconstitution:	A quick spin of the vial followed by reconstitution in sterile distilled water to a concentration not less than 0.1 mg/mL is recommended. Please note, filter sterilization is a must following reconstitution. This solution can then be diluted into other buffers.
Storage:	4 °C,-20 °C
Storage Comment:	The lyophilized protein is stable for at least one year from date of receipt at -70°C. Upon reconstitution, this cytokine can be stored in working aliquots at 2° - 8°C for one month, or at -20°C for six months, with a carrier protein without detectable loss of activity. Avoid repeated freeze/thaw cycles.

## Images



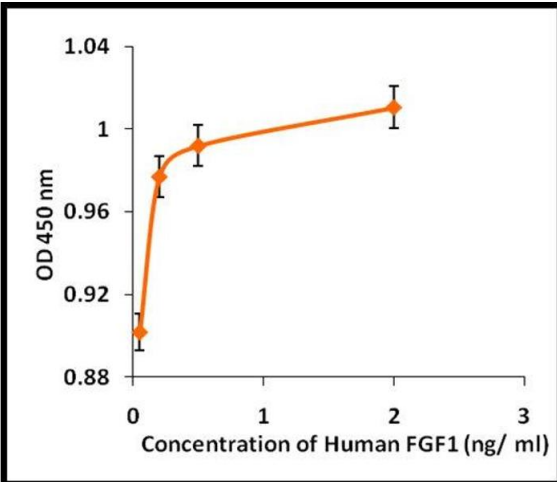
### SDS-PAGE

**Image 1.**



Activity Assay

Image 2.



Activity Assay

Image 3.