

Datasheet for ABIN5509786

IL28A Protein**1** Image[Go to Product page](#)

Overview

| | |
|----------------------|----------------------------|
| Quantity: | 20 µg |
| Target: | IL28A |
| Origin: | Human |
| Source: | Escherichia coli (E. coli) |
| Protein Type: | Recombinant |
| Biological Activity: | Active |
| Application: | Functional Studies (Func) |

Product Details

| | |
|------------------|-------------------------------------|
| Characteristics: | Recombinant Human IL28A |
| Purity: | >95 % as determined by SDS-PAGE |
| Endotoxin Level: | < 1.0 EU of endotoxin/µg of protein |

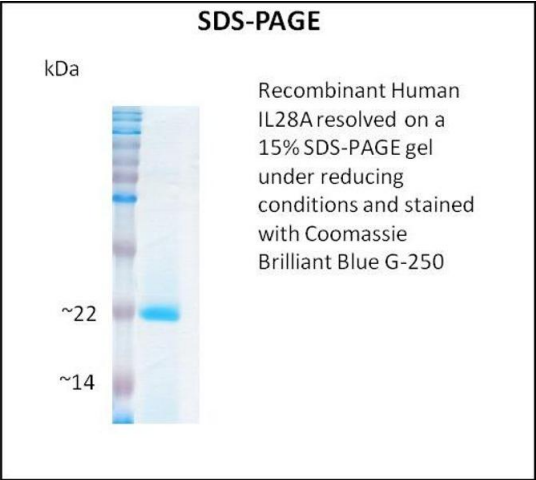
Target Details

| | |
|-------------------|--|
| Target: | IL28A |
| Alternative Name: | IL28A (IL28A Products) |
| Molecular Weight: | 19,5 |
| Gene ID: | 282616 |
| UniProt: | Q8IZJ0 |

Application Details

| | |
|--------------------|---|
| Application Notes: | Optimal working dilution should be determined by the investigator. |
| Restrictions: | For Research Use only |
| Handling | |
| Format: | Lyophilized |
| Reconstitution: | A quick spin of the vial followed by reconstitution in sterile distilled water to a concentration not less than 0.1 mg/mL is recommended. Please note, filter sterilization is a must following reconstitution. This solution can then be diluted into other buffers. |
| Storage: | 4 °C,-20 °C |
| Storage Comment: | The lyophilized protein is stable for at least one year from date of receipt at -70°C. Upon reconstitution, this cytokine can be stored in working aliquots at 2° - 8°C for one month, or at -20°C for six months, with a carrier protein without detectable loss of activity. Avoid repeated freeze/thaw cycles. |

Images



SDS-PAGE

Image 1.