



[Go to Product page](#)

Datasheet for ABIN5509788

## FIL1h Protein

### 2 Images

#### Overview

|                      |                            |
|----------------------|----------------------------|
| Quantity:            | 10 µg                      |
| Target:              | FIL1h                      |
| Origin:              | Human                      |
| Source:              | Escherichia coli (E. coli) |
| Protein Type:        | Recombinant                |
| Biological Activity: | Active                     |
| Application:         | Functional Studies (Func)  |

#### Product Details

|                  |                                     |
|------------------|-------------------------------------|
| Characteristics: | Recombinant Human IL36B             |
| Purity:          | >95 % as determined by SDS-PAGE     |
| Endotoxin Level: | < 1.0 EU of endotoxin/µg of protein |

#### Target Details

|                   |  |
|-------------------|--|
| Target:           | FIL1h                                    |
| Alternative Name: | IL36B ( <a href="#">FIL1h Products</a> ) |
| Molecular Weight: | 17,5                                     |
| Gene ID:          | 27177                                    |
| UniProt:          | <a href="#">Q9NZH7</a>                   |

## Application Details

Application Notes: Optimal working dilution should be determined by the investigator.

Restrictions: For Research Use only

## Handling

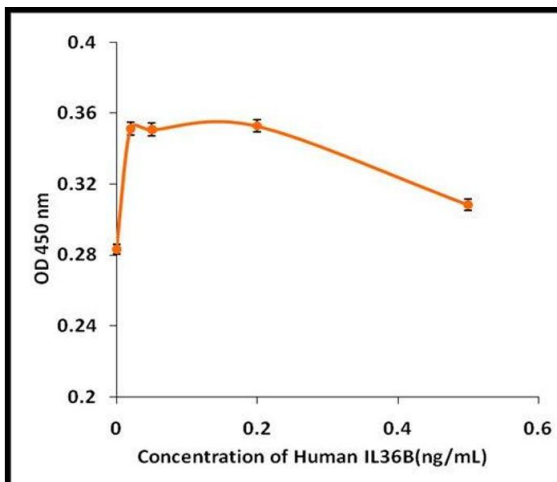
Format: Lyophilized

Reconstitution: A quick spin of the vial followed by reconstitution in sterile distilled water to a concentration not less than 0.1 mg/mL is recommended. Please note, filter sterilization is a must following reconstitution. This solution can then be diluted into other buffers.

Storage: 4 °C,-20 °C

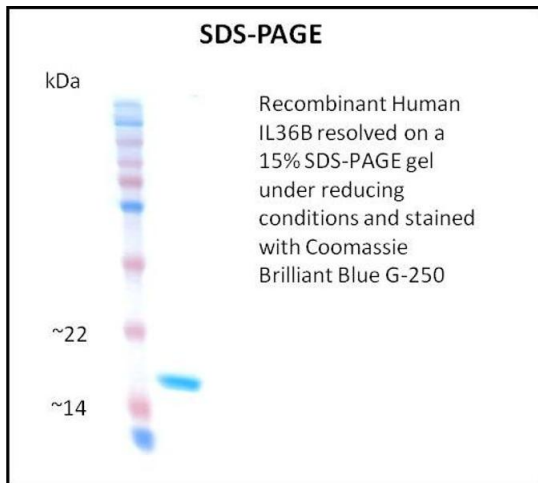
Storage Comment: The lyophilized protein is stable for at least one year from date of receipt at -70°C. Upon reconstitution, this cytokine can be stored in working aliquots at 2° - 8°C for one month, or at -20°C for six months, with a carrier protein without detectable loss of activity. Avoid repeated freeze/thaw cycles.

## Images



### Activity Assay

Image 1.



**SDS-PAGE**

**Image 2.**