



[Go to Product page](#)

Datasheet for ABIN5509805

G-CSF Protein

2 Images

Overview

Quantity:	5 µg
Target:	G-CSF (CSF3)
Origin:	Rat
Source:	Escherichia coli (E. coli)
Protein Type:	Recombinant
Biological Activity:	Active
Application:	Functional Studies (Func)

Product Details

Characteristics:	Recombinant Rat G-CSF (CSF3)
Purity:	>95 % as determined by SDS-PAGE
Endotoxin Level:	< 1.0 EU of endotoxin/µg of protein

Target Details

Target:	G-CSF (CSF3)
Alternative Name:	G-CSF (CSF3) (CSF3 Products)
Molecular Weight:	21,8
UniProt:	P97712
Pathways:	Cellular Response to Molecule of Bacterial Origin, Regulation of Actin Filament Polymerization

Application Details

Application Notes: Optimal working dilution should be determined by the investigator.

Restrictions: For Research Use only

Handling

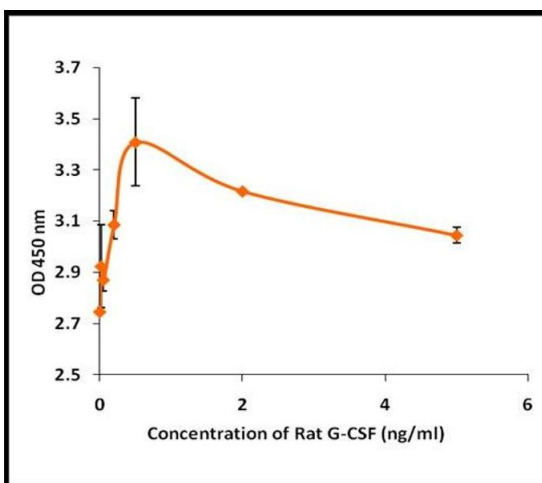
Format: Lyophilized

Reconstitution: A quick spin of the vial followed by reconstitution in sterile distilled water to a concentration not less than 0.1 mg/mL is recommended. Please note, filter sterilization is a must following reconstitution. This solution can then be diluted into other buffers.

Storage: 4 °C, -20 °C

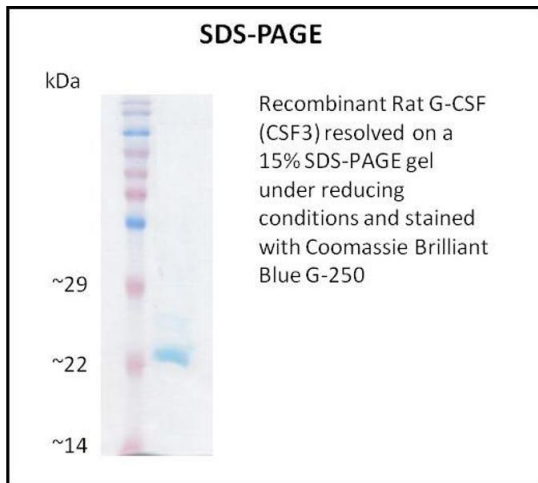
Storage Comment: The lyophilized protein is stable for at least one year from date of receipt at -70°C. Upon reconstitution, this cytokine can be stored in working aliquots at 2° - 8°C for one month, or at -20°C for six months, with a carrier protein without detectable loss of activity. Avoid repeated freeze/thaw cycles.

Images



Activity Assay

Image 1.



SDS-PAGE

Image 2.