



[Go to Product page](#)

Datasheet for ABIN5510059

## FIL1d Protein

### 1 Image

#### Overview

Quantity:	20 µg
Target:	FIL1d
Origin:	Human
Source:	Escherichia coli (E. coli)
Protein Type:	Recombinant
Biological Activity:	Active
Application:	Functional Studies (Func)

#### Product Details

Characteristics:	Recombinant Human IL36RN (IL1F5)
Purity:	>95 % as determined by SDS-PAGE
Endotoxin Level:	< 1.0 EU of endotoxin/µg of protein

#### Target Details

Target:	FIL1d
Alternative Name:	IL36RN (IL1F5) ( <a href="#">FIL1d Products</a> )
Gene ID:	26525

#### Application Details

Application Notes:	Optimal working dilution should be determined by the investigator.
--------------------	--

## Application Details

---

Restrictions: For Research Use only

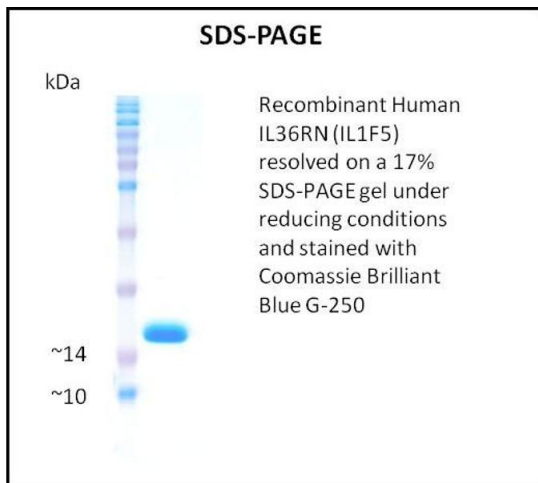
## Handling

---

Storage: 4 °C,-20 °C

## Images

---



### SDS-PAGE

**Image 1.**