



[Go to Product page](#)

Datasheet for ABIN5510529

BMP5 ELISA Kit

1 Image

Overview

Quantity: 96 tests

Target: BMP5

Binding Specificity: AA 317-454

Reactivity: Rabbit

Method Type: Sandwich ELISA

Application: ELISA

Product Details

Purpose: Sandwich High Sensitivity ELISA kit for Quantitative Detection of rabbit BMP-5

Brand: PicoKine™

Analytical Method: Quantitative

Detection Method: Colorimetric

Specificity: Expression system for standard: NSO
Immunogen sequence: A317-H454

Cross-Reactivity (Details): There is no detectable cross-reactivity with other relevant proteins.

Characteristics: Sequence similarities: Belongs to the TGF-beta family.
Tissue Specificity: Expressed in the lung and liver.

Target Details

Target: BMP5

Target Details

Alternative Name: [BMP5 \(BMP5 Products\)](#)

Background: Protein Function: Induces cartilage and bone formation.
Background: Bone morphogenetic protein 5 is a protein that in humans is encoded by the BMP5 gene.^{1,2,3} The protein encoded by this gene is member of the TGFbeta superfamily. Bone morphogenetic proteins are known for their ability to induce bone and cartilage development. BMP5 may play a role in certain cancers. Like other BMP's BMP5 is inhibited by chordin and noggin. It is expressed in the trabecular meshwork and optic nerve head and may have a role in the development and normal function. It is also expressed in the lung and liver. BMP-5 is mapped on rabbit chromosome 6.⁴ The standard used in this kit is recombinant BMP-5 with the monomer molecular mass of 18KDa.
Synonyms: Bone morphogenetic protein 5,BMP-5,BMP5,
Full Gene Name: Bone morphogenetic protein 5
Cellular Localisation: Secreted.

UniProt: [P22003](#)

Pathways: [Regulation of Hormone Metabolic Process](#), [Regulation of Hormone Biosynthetic Process](#)

Application Details

Plate: Pre-coated

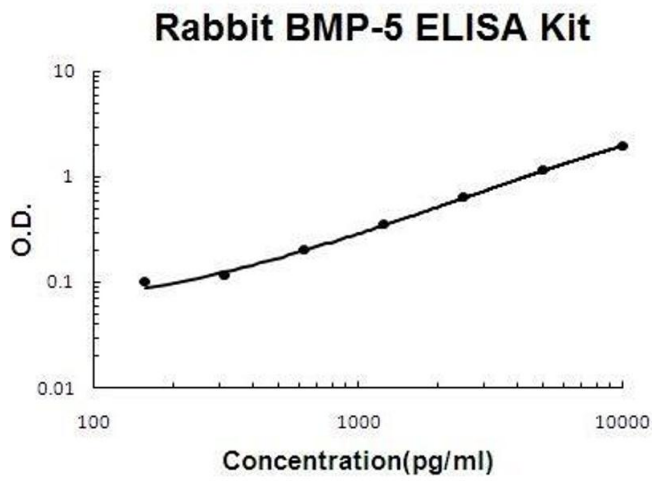
Restrictions: For Research Use only

Handling

Storage: 4 °C,-20 °C

Storage Comment: Store at 4°C for 6 months, at -20°C for 12 months. Avoid multiple freeze-thaw cycles(Shipped with wet ice.)

Expiry Date: 12 months



ELISA

Image 1. Rabbit BMP-5 PicoKine ELISA Kit standard curve