



[Go to Product page](#)

Datasheet for ABIN5510561

TGFA ELISA Kit

1 Image

Overview

Quantity: 96 tests

Target: TGFA

Binding Specificity: AA 40-89

Reactivity: Horse

Method Type: Sandwich ELISA

Application: ELISA

Product Details

Purpose: Sandwich High Sensitivity ELISA kit for Quantitative Detection of horse equine TGF alpha

Brand: PicoKine™

Analytical Method: Quantitative

Detection Method: Colorimetric

Specificity: Expression system for standard: E.coli,V40-A89

Cross-Reactivity (Details): There is cross-reactivity with TGF beta 2, TGF beta 3, TGF beta 5<1 % .

Characteristics: Tissue Specificity: Isoform 1, isoform 3 and isoform 4 are expressed in keratinocytes and tumor-derived cell lines. .

Target Details

Target: TGFA

Alternative Name: TGFA ([TGFA Products](#))

Target Details

Background: Protein Function: TGF alpha is a mitogenic polypeptide that is able to bind to the EGF receptor/EGFR and to act synergistically with TGF beta to promote anchorage-independent cell proliferation in soft agar.

Background: Transforming growth factor alpha(TGF-alpha) is upregulated in some horse equine cancers. It is produced in macrophages, brain cells, and keratinocytes, and induces epithelial development. It is closely related to EGF, and can also bind to the EGF receptor with similar effects. TGFalpha stimulates neural cell proliferation in the adult injured brain.

Transforming growth factor alpha gene(TGFA) maps to horse equine chromosome 2 close to the breakpoint of the t(2,8) variant translocation in Burkitt lymphoma. Synthetic TGF-alpha was as active as murine epidermal growth factor in binding to the epidermal growth factor receptor and in stimulation of anchorage-dependent and of anchorage-independent growth of normal indicator cells in culture. Synthetic TGF-alpha stimulated plasminogen activator production in A 431 and HeLa cells, the stimulation was similar to that induced by epidermal growth factor. Furthermore, synthetic horse equine TGF-alpha showed similar immunoreactivity when compared with horse equine TGF-alpha. Thus, the 50-amino acid TGF-alpha is likely to be the bioactive principle produced and secreted by tumor cell lines.

Synonyms: Protransforming growth factor alpha, Transforming growth factor alpha, TGF-alpha, EGF-like TGF, ETGF, TGF type 1, TGFA,

Full Gene Name: Protransforming growth factor alpha

Cellular Localisation: Transforming growth factor alpha: Secreted, extracellular space.

UniProt: [P01135](#)

Pathways: [NF-kappaB Signaling](#), [RTK Signaling](#), [EGFR Signaling Pathway](#)

Application Details

Plate: Pre-coated

Restrictions: For Research Use only

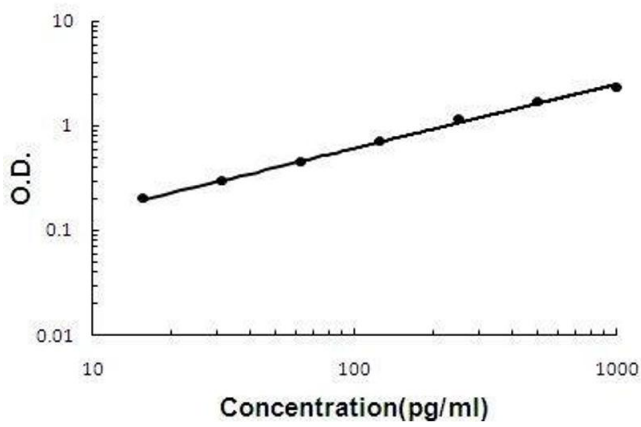
Handling

Storage: 4 °C, -20 °C

Storage Comment: Store at 4°C for 6 months, at -20°C for 12 months. Avoid multiple freeze-thaw cycles(Shipped with wet ice.)

Expiry Date: 12 months

Equine TGF α ELISA Kit



ELISA

Image 1. Horse equine TGF alpha PicoKine ELISA Kit standard curve