



[Go to Product page](#)

Datasheet for ABIN5510609

TGFB2 ELISA Kit

1 Image

Overview

Quantity: 96 tests

Target: TGFB2

Binding Specificity: AA 303-414

Reactivity: Horse

Method Type: Sandwich ELISA

Application: ELISA

Product Details

Purpose: Sandwich High Sensitivity ELISA kit for Quantitative Detection of activated horse equine TGF-beta 2

Brand: PicoKine™

Analytical Method: Quantitative

Detection Method: Colorimetric

Specificity: Expression system for standard: NSO
Immunogen sequence: A303-S414

Cross-Reactivity (Details): There is no detectable cross-reactivity with other relevant proteins.

Characteristics: Sequence similarities: Belongs to the TGF-beta family.

Target Details

Target: TGFB2

Target Details

Alternative Name: [TGFB2 \(TGFB2 Products\)](#)

Background: Protein Function: TGF-beta 2 has suppressive effects on interleukin-2 dependent T-cell growth.
Background: Transforming growth factor-beta 2(TGF-beta 2) is a secreted protein known as a cytokine that performs many cellular functions and has a vital role during embryonic development. This gene is mapped to 1q41. It is an extracellular glycosylated protein. It is known to suppress the effects of interleukin dependent T-cell tumors. TGF-beta 2 is present at elevated levels in the aqueous humor of patients with primary open angle glaucoma(POAG). Studies have shown that TGF-beta 2 influences cultured trabecular meshwork cells, and it reduced outflow facility when perfused into cultured horse equine anterior segments. In POAG, elevated expression of Gremlin by TM cells inhibited BMP4 antagonism of TGF-beta 2 and led to increased extracellular matrix deposition and elevated IOP.
Synonyms: Transforming growth factor beta-2,TGF-beta-2,BSC-1 cell growth inhibitor,Cetermin,Glioblastoma-derived T-cell suppressor factor,G-TSF,Polyergin,Latency-associated peptide,LAP,TGFB2,
Full Gene Name: Transforming growth factor beta-2
Cellular Localisation: Secreted.

UniProt: [P61812](#)

Pathways: [Cell-Cell Junction Organization](#), [Production of Molecular Mediator of Immune Response](#), [Protein targeting to Nucleus](#)

Application Details

Plate: Pre-coated

Restrictions: For Research Use only

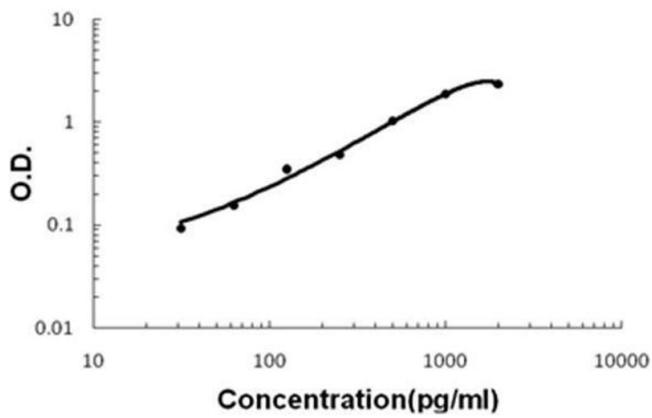
Handling

Storage: 4 °C,-20 °C

Storage Comment: Store at 4°C for 6 months, at -20°C for 12 months. Avoid multiple freeze-thaw cycles(Shipped with wet ice.)

Expiry Date: 12 months

Equine TGF-beta 2 ELISA Kit



ELISA

Image 1. Horse equine TGF-beta 2 PicoKine ELISA Kit standard curve