



Datasheet for ABIN5510652

SFRP5 ELISA Kit



[Go to Product page](#)

1 Image

Overview

Quantity: 96 tests

Target: SFRP5

Binding Specificity: AA 30-317

Reactivity: Rabbit

Method Type: Sandwich ELISA

Application: ELISA

Product Details

Purpose: Sandwich High Sensitivity ELISA kit for Quantitative Detection of rabbit SFRP5

Brand: PicoKine™

Analytical Method: Quantitative

Detection Method: Colorimetric

Specificity: Expression system for standard: CHO
Immunogen sequence: E30-H317

Cross-Reactivity (Details): There is no detectable cross-reactivity with other relevant proteins.

Characteristics: Tissue Specificity: Highly expressed in the retinal pigment epithelium (RPE) and pancreas. Weak expression in heart, liver and muscle. .

Target Details

Target: SFRP5

Target Details

Alternative Name: SFRP5 ([SFRP5 Products](#))

Background: Protein Function: Soluble frizzled-related proteins (sFRPS) function as modulators of Wnt signaling through direct interaction with Wnts. They have a role in regulating cell growth and differentiation in specific cell types. SFRP5 may be involved in determining the polarity of photoreceptor, and perhaps, other cells in the retina.

Background: Secreted frizzled-related protein 5 is a protein that in humans is encoded by the SFRP5 gene. SFRP5 is a member of the SFRP family that contains a cysteine-rich domain homologous to the putative Wnt-binding site of Frizzled proteins. SFRPs act as soluble modulators of Wnt signaling. SFRP5 and SFRP1 may be involved in determining the polarity of photoreceptor cells in the retina. SFRP5 is highly expressed in the retinal pigment epithelium, and moderately expressed in the pancreas.

Synonyms: Secreted frizzled-related protein 5,sFRP-5,Frizzled-related protein 1b,FRP-1b,Secreted apoptosis-related protein 3,SARP-3,SFRP5,FRP1B, SARP3,

Full Gene Name: Secreted frizzled-related protein 5

Cellular Localisation: Secreted.

UniProt: [Q5T4F7](#)

Pathways: [WNT Signaling](#)

Application Details

Plate: Pre-coated

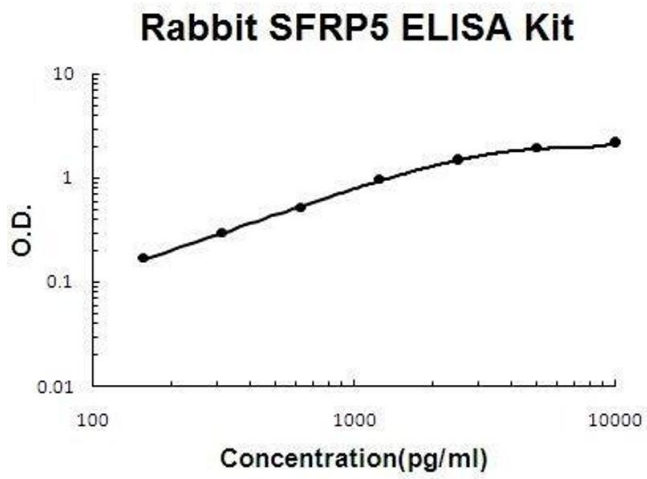
Restrictions: For Research Use only

Handling

Storage: 4 °C,-20 °C

Storage Comment: Store at 4°C for 6 months, at -20°C for 12 months. Avoid multiple freeze-thaw cycles(Shipped with wet ice.)

Expiry Date: 12 months



ELISA

Image 1. Rabbit SFRP5 PicoKine ELISA Kit standard curve