

Datasheet for ABIN5510671  
**GDF5 ELISA Kit**[Go to Product page](#)

## 1 Image

## Overview

Quantity:	96 tests
Target:	GDF5
Binding Specificity:	AA 376-495
Reactivity:	Chicken
Method Type:	Sandwich ELISA
Application:	ELISA

## Product Details

Purpose:	Sandwich High Sensitivity ELISA kit for Quantitative Detection of chicken GDF5
Brand:	PicoKine™
Analytical Method:	Quantitative
Detection Method:	Colorimetric
Specificity:	Expression system for standard: E.coli Immunogen sequence: A376-R495
Cross-Reactivity (Details):	There is no detectable cross-reactivity with other relevant proteins.

## Target Details

Target:	GDF5
Alternative Name:	Gdf5 ( <a href="#">GDF5 Products</a> )
Background:	Background: Growth/differentiation factor 5 is a protein that in humans is encoded by the GDF5

## Target Details

gene. GDF5 is a protein belonging to the transforming growth factor beta superfamily that is expressed in the developing central nervous system, and has a role in skeletal and joint development. It also increases the survival of neurones that respond to the neurotransmitter dopamine, and is a potential therapeutic molecule associated with Parkinson's disease.

Synonyms: Growth and differentiation factor-5 ,Gdf5 ,gdf-5 ,

Full Gene Name: growth differentiation factor 5

Cellular Localisation: Secreted.

UniProt: [Q8K4X5](#)

## Application Details

Plate: Pre-coated

Restrictions: For Research Use only

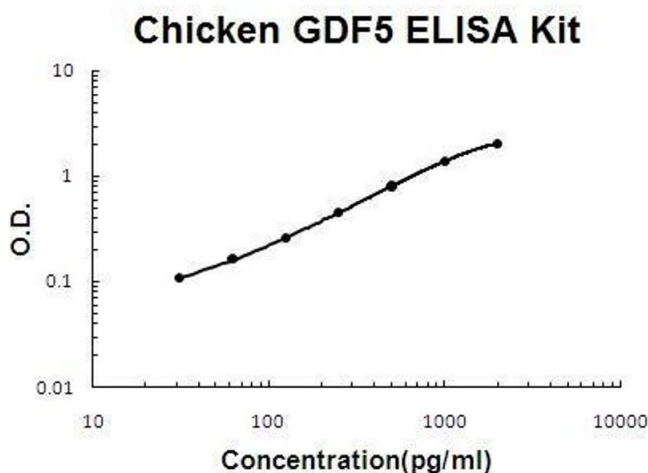
## Handling

Storage: 4 °C,-20 °C

Storage Comment: Store at 4°C for 6 months, at -20°C for 12 months. Avoid multiple freeze-thaw cycles(Shipped with wet ice.)

Expiry Date: 12 months

## Images



### ELISA

**Image 1.** Chicken GDF5 PicoKine ELISA Kit standard curve