

Datasheet for ABIN5510712

Syndecan 1 ELISA Kit**1** Image[Go to Product page](#)

Overview

Quantity:	96 tests
Target:	Syndecan 1 (SDC1)
Binding Specificity:	AA 18-252
Reactivity:	Mouse
Method Type:	Sandwich ELISA
Application:	ELISA

Product Details

Purpose:	Sandwich High Sensitivity ELISA kit for Quantitative Detection of Mouse Syndecan-1/SDC1
Brand:	PicoKine™
Analytical Method:	Quantitative
Detection Method:	Colorimetric
Specificity:	Expression system for standard: NSO Immunogen sequence: Q18-E252
Cross-Reactivity (Details):	There is no detectable cross-reactivity with other relevant proteins.

Target Details

Target:	Syndecan 1 (SDC1)
Alternative Name:	Sdc1 (SDC1 Products)
Background:	Protein Function: Cell surface proteoglycan that bears both heparan sulfate and chondroitin

Target Details

sulfate and that links the cytoskeleton to the interstitial matrix. Regulates exosome biogenesis in concert with SDCBP and PDGFR. .

Background: Syndecan 1, also known as SYND1 or CD138, is a protein which in humans is encoded by the SDC1 gene. The protein encoded by this gene is a transmembrane(type I) heparan sulfate proteoglycan and is a member of the syndecan proteoglycan family. This gene is mapped to 2p24.1. The syndecans mediate cell binding, cell signaling, cytoskeletal organization and syndecan receptors are required for internalization of the HIV-1 tat protein. The syndecan 1 protein functions as an integral membrane protein and participates in cell proliferation, cell migration and cell-matrix interactions via its receptor for extracellular matrix proteins. What's more, Syndecan-1 is also a sponge for growth factors, with binding largely via heparan sulfate chains.

Synonyms: Syndecan-1, SYND1, CD138, Sdc1, Synd-1, Synd1,

Full Gene Name: Syndecan-1

Cellular Localisation: Membrane, Single-pass type I membrane protein . Secreted . Secreted, exosome . Shedding of the ectodomain produces a soluble form..

UniProt: [P18828](#)

Pathways: [Glycosaminoglycan Metabolic Process](#), [Regulation of Muscle Cell Differentiation](#), [Skeletal Muscle Fiber Development](#), [Lipid Metabolism](#)

Application Details

Plate: Pre-coated

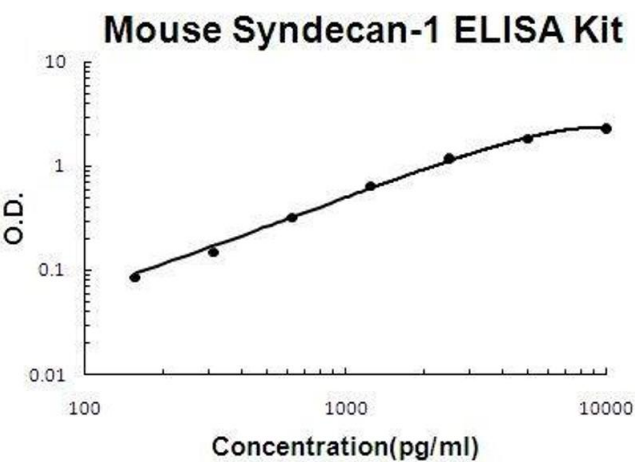
Restrictions: For Research Use only

Handling

Storage: 4 °C, -20 °C

Storage Comment: Store at 4°C for 6 months, at -20°C for 12 months. Avoid multiple freeze-thaw cycles(Shipped with wet ice.)

Expiry Date: 12 months



ELISA

Image 1. Mouse Syndecan-1/SDC1 PicoKine ELISA Kit standard curve