

Datasheet for ABIN5510714
SDC3 ELISA Kit[Go to Product page](#)

1 Image

Overview

Quantity:	96 tests
Target:	SDC3
Binding Specificity:	AA 45-387
Reactivity:	Mouse
Method Type:	Sandwich ELISA
Application:	ELISA

Product Details

Purpose:	Sandwich High Sensitivity ELISA kit for Quantitative Detection of Mouse Syndecan-3/SDC3
Brand:	PicoKine™
Analytical Method:	Quantitative
Detection Method:	Colorimetric
Specificity:	Expression system for standard: NSO Immunogen sequence: A45-V387
Cross-Reactivity (Details):	There is no detectable cross-reactivity with other relevant proteins.

Target Details

Target:	SDC3
Alternative Name:	Sdc3 (SDC3 Products)
Background:	Protein Function: Cell surface proteoglycan that may bear heparan sulfate. May have a role in

Target Details

the organization of cell shape by affecting the actin cytoskeleton, possibly by transferring signals from the cell surface in a sugar-dependent mechanism (By similarity). .

Background: Syndecan-3 is a protein that in humans is encoded by the SDC3 gene. The protein encoded by this gene belongs to the syndecan proteoglycan family, which was assigned to human chromosome 1p35.2, and it showed that in the mouse the Synd3 gene maps to chromosome 4 near the Lmyc gene. The transfection of SDC3 resulted in the formation of long filopodia-like structures, microspikes, and varicosities in several cell lines. Besides, the gene plays a role in the organization of cell shape by affecting the actin cytoskeleton, possibly by transferring signals from the cell surface in a sugar-dependent mechanism. Allelic variants of this gene have been associated with obesity.

Synonyms: Syndecan-3,SYND3,Sdc3,Kiaa0468,

Full Gene Name: Syndecan-3

Cellular Localisation: Membrane, Single-pass type I membrane protein.

UniProt: [Q64519](#)

Pathways: [Glycosaminoglycan Metabolic Process](#)

Application Details

Plate: Pre-coated

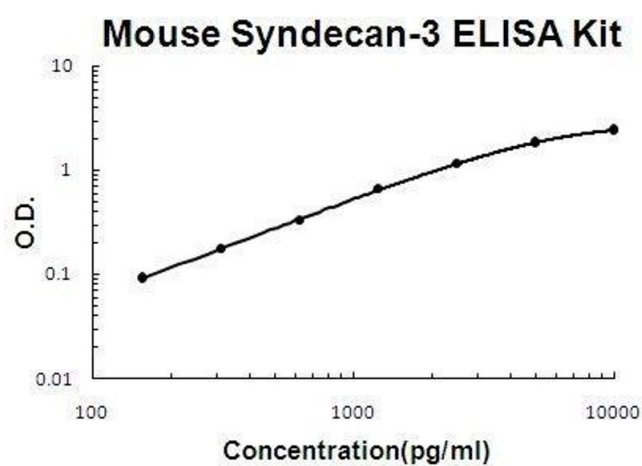
Restrictions: For Research Use only

Handling

Storage: 4 °C,-20 °C

Storage Comment: Store at 4°C for 6 months, at -20°C for 12 months. Avoid multiple freeze-thaw cycles(Shipped with wet ice.)

Expiry Date: 12 months



ELISA

Image 1. Mouse Syndecan-3/SDC3 PicoKine ELISA Kit standard curve