

Datasheet for ABIN5510749

**GDF2 ELISA Kit****1** Image[Go to Product page](#)

## Overview

Quantity:	96 tests
Target:	GDF2
Binding Specificity:	AA 320-430
Reactivity:	Rat
Method Type:	Sandwich ELISA
Application:	ELISA

## Product Details

Purpose:	Sandwich High Sensitivity ELISA kit for Quantitative Detection of Rat BMP-9
Brand:	PicoKine™
Analytical Method:	Quantitative
Detection Method:	Colorimetric
Specificity:	Expression system for standard: CHO, Immunogen sequence: S320-R430
Cross-Reactivity (Details):	There is no detectable cross-reactivity with other relevant proteins.

## Target Details

Target:	GDF2
Alternative Name:	Gdf2 ( <a href="#">GDF2 Products</a> )
Background:	Background: Growth differentiation factor 2 (GDF2) also known as bone morphogenetic protein (BMP)-9 is a secreted ligand of the TGF-beta (transforming growth factor-beta) superfamily of

## Target Details

proteins. Ligands of this family bind various TGF-beta receptors leading to recruitment and activation of SMAD family transcription factors that regulate gene expression. The preproprotein is proteolytically processed to generate each subunit of the disulfide-linked homodimer. This protein regulates cartilage and bone development, angiogenesis and differentiation of cholinergic central nervous system neurons. Homozygous null mice exhibit malformations of the vasculature and skeleton.

Synonyms: Growth differentiation factor 2

Full Gene Name: growth differentiation factor 2

Cellular Localisation: Secreted

UniProt:	<a href="#">M0RB87</a>
Pathways:	<a href="#">Transition Metal Ion Homeostasis</a>

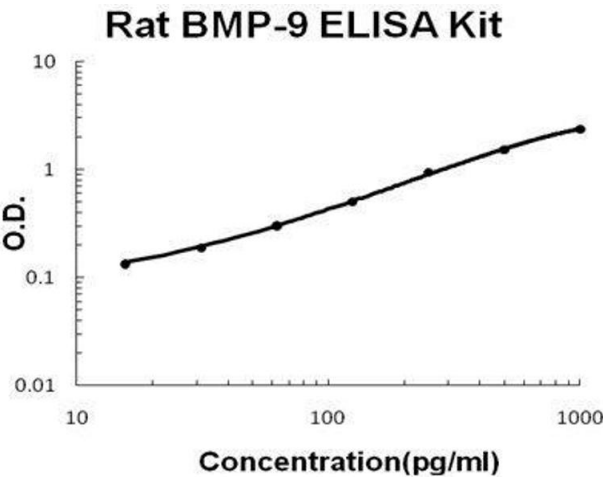
## Application Details

Plate:	Pre-coated
Restrictions:	For Research Use only

## Handling

Storage:	4 °C,-20 °C
Storage Comment:	Store at 4°C for 6 months, at -20°C for 12 months. Avoid multiple freeze-thaw cycles(Shipped with wet ice.)
Expiry Date:	12 months

## Images



### ELISA

**Image 1.** Rat BMP-9 PicoKine ELISA Kit standard curve