

Datasheet for ABIN5514408
anti-JMJD7 antibody (C-Term)



[Go to Product page](#)

1 Image

Overview

Quantity:	100 µL
Target:	JMJD7
Binding Specificity:	C-Term
Reactivity:	Human, Mouse, Rat, Dog, Cow, Guinea Pig, Horse, Rabbit
Host:	Rabbit
Clonality:	Polyclonal
Conjugate:	This JMJD7 antibody is un-conjugated
Application:	Western Blotting (WB)

Product Details

Immunogen:	The immunogen is a synthetic peptide directed towards the C-terminal region of Human PA24B
Sequence:	AAAGEVNLSS SDSPYHYTKV TYSQEDVDKL LHLTHYNVCN NQEQLLEALR
Predicted Reactivity:	Cow: 79%, Dog: 79%, Guinea Pig: 86%, Horse: 79%, Human: 100%, Mouse: 100%, Rabbit: 79%, Rat: 100%
Characteristics:	This is a rabbit polyclonal antibody against PA24B. It was validated on Western Blot.
Purification:	Affinity Purified

Target Details

Target:	JMJD7
Alternative Name:	PA24B (JMJD7 Products)

Target Details

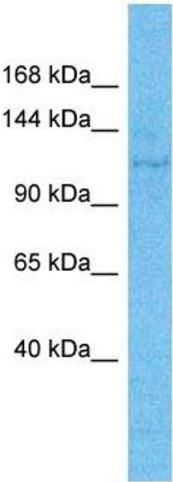
Background:	<p>This locus represents naturally-occurring readthrough transcription between the neighboring jumonji domain containing 7 (JMJD7) and phospholipase A2, group IVB (cytosolic) (PLA2G4B) genes. Readthrough transcripts encode fusion proteins that share amino acid sequence with each individual gene product, including a partial JmjC domain and downstream C2 and phospholipase A2 domains. Alternatively spliced transcript variants have been observed.</p> <p>Alias Symbols: PLA2G4B,</p> <p>Protein Size: 1012</p>
Gene ID:	8681
NCBI Accession:	NP_005081

Application Details

Application Notes:	Optimal working dilution should be determined by the investigator.
Restrictions:	For Research Use only

Handling

Format:	Liquid
Buffer:	Liquid. Purified antibody supplied in 1x PBS buffer with 0.09 % (w/v) sodium azide and 2 % sucrose.
Preservative:	Sodium azide
Precaution of Use:	This product contains Sodium azide: a POISONOUS AND HAZARDOUS SUBSTANCE which should be handled by trained staff only.
Storage:	-20 °C
Storage Comment:	For short term use, store at 2-8°C up to 1 week. For long term storage, store at -20°C in small aliquots to prevent freeze-thaw cycles.



Western Blotting

Image 1. Host: Rabbit Target Name: PA24B Sample Type: Jurkat Whole Cell lysates Antibody Dilution: 1.0ug/ml