



[Go to Product page](#)

Datasheet for ABIN5514425

anti-SPIT2 antibody (Middle Region)

1 Image

Overview

Quantity:	100 µL
Target:	SPIT2
Binding Specificity:	Middle Region
Reactivity:	Human, Cow, Horse, Pig
Host:	Rabbit
Clonality:	Polyclonal
Conjugate:	This SPIT2 antibody is un-conjugated
Application:	Western Blotting (WB)

Product Details

Immunogen:	The immunogen is a synthetic peptide directed towards the middle region of Human SPIT2
Sequence:	ATGDLATSRN AADSSVPSAP RRQDSEDHSS DMFNYYEYCT ANAVTGPCRA
Predicted Reactivity:	Cow: 86%, Horse: 79%, Human: 100%, Pig: 86%
Characteristics:	This is a rabbit polyclonal antibody against SPIT2. It was validated on Western Blot.
Purification:	Affinity purified

Target Details

Target:	SPIT2
Alternative Name:	SPIT2 (SPIT2 Products)
Background:	This gene encodes a transmembrane protein with two extracellular Kunitz domains that inhibits

Target Details

a variety of serine proteases. The protein inhibits HGF activator which prevents the formation of active hepatocyte growth factor. This gene is a putative tumor suppressor, and mutations in this gene result in congenital sodium diarrhea. Multiple transcript variants encoding different isoforms have been found for this gene.

Alias Symbols: SPINT2, HAI2, KOP,

Protein Interaction Partner: TUBG1, APP, UBC, SUMO4, HGFAC, ITIH3, CTSB, ITIH2,

Protein Size: 252

Gene ID: 10653

NCBI Accession: [NP_066925](#)

UniProt: [O43291](#)

Application Details

Application Notes: Optimal working dilution should be determined by the investigator.

Restrictions: For Research Use only

Handling

Format: Liquid

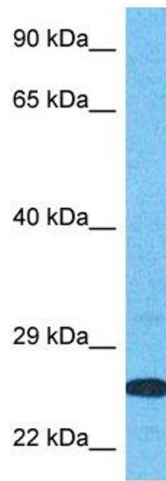
Buffer: Liquid. Purified antibody supplied in 1x PBS buffer with 0.09 % (w/v) sodium azide and 2 % sucrose.

Preservative: Sodium azide

Precaution of Use: This product contains Sodium azide: a POISONOUS AND HAZARDOUS SUBSTANCE which should be handled by trained staff only.

Storage: -20 °C

Storage Comment: For short term use, store at 2-8°C up to 1 week. For long term storage, store at -20°C in small aliquots to prevent freeze-thaw cycles.



Western Blotting

Image 1. Host: Rabbit Target Name: SPIT2 Sample Type: MCF7 Whole Cell lysates Antibody Dilution: 1.0ug/ml