



[Go to Product page](#)

Datasheet for ABIN5514464
anti-MYCL2 antibody (N-Term)

1 Image

Overview

Quantity:	100 µL
Target:	MYCL2
Binding Specificity:	N-Term
Reactivity:	Human
Host:	Rabbit
Clonality:	Polyclonal
Conjugate:	This MYCL2 antibody is un-conjugated
Application:	Western Blotting (WB)

Product Details

Immunogen:	The immunogen is a synthetic peptide directed towards the N-terminal region of human MYCLP1
Sequence:	LLAVGAPSGY SPKEFATPDY TPELEAGNLA PIFPCLLGEP KIQACSRSES
Characteristics:	This is a rabbit polyclonal antibody against MYCLP1. It was validated on Western Blot.
Purification:	Affinity Purified

Target Details

Target:	MYCL2
Alternative Name:	MYCLP1 (MYCL2 Products)
Background:	The function of this protein remains unknown.

Target Details

Alias Symbols: MYCLP1, MYCL1P1, MYCL2,

Protein Size: 357

UniProt: [P12525](#)

Application Details

Application Notes: Optimal working dilution should be determined by the investigator.

Restrictions: For Research Use only

Handling

Format: Liquid

Buffer: Liquid. Purified antibody supplied in 1x PBS buffer with 0.09 % (w/v) sodium azide and 2 % sucrose.

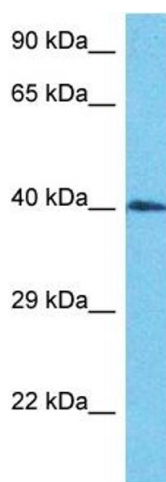
Preservative: Sodium azide

Precaution of Use: This product contains Sodium azide: a POISONOUS AND HAZARDOUS SUBSTANCE which should be handled by trained staff only.

Storage: -20 °C

Storage Comment: For short term use, store at 2-8°C up to 1 week. For long term storage, store at -20°C in small aliquots to prevent freeze-thaw cycles.

Images



Western Blotting

Image 1. Host: Rabbit Target Name: MYCLP1 Sample Type: HepG2 Whole Cell lysates Antibody Dilution: 1.0ug/ml