

Datasheet for ABIN5514554
anti-ZNF160 antibody (C-Term)[Go to Product page](#)

1 Image

Overview

Quantity:	100 µL
Target:	ZNF160
Binding Specificity:	C-Term
Reactivity:	Human, Mouse, Rabbit, Rat, Cow, Dog, Guinea Pig, Horse
Host:	Rabbit
Clonality:	Polyclonal
Conjugate:	This ZNF160 antibody is un-conjugated
Application:	Western Blotting (WB)

Product Details

Immunogen:	The immunogen is a synthetic peptide directed towards the C-terminal region of Human ZN160
Sequence:	KVFTQNSHLA NHQRTHTGEK PYRCNECGKA FSVRSSLTTH QAIHTGKKPY
Predicted Reactivity:	Cow: 83%, Dog: 83%, Guinea Pig: 83%, Horse: 85%, Human: 100%, Mouse: 100%, Rabbit: 93%, Rat: 100%
Characteristics:	This is a rabbit polyclonal antibody against ZN160. It was validated on Western Blot.
Purification:	Affinity purified

Target Details

Target:	ZNF160
Alternative Name:	ZN160 (ZNF160 Products)

Target Details

Background:	<p>The protein encoded by this gene is a Kruppel-related zinc finger protein which is characterized by the presence of an N-terminal repressor domain, the Kruppel-associated box (KRAB). The KRAB domain is a potent repressor of transcription, thus this protein may function in transcription regulation. Three alternative transcripts encoding the same protein have been described.</p> <p>Alias Symbols: ZNF160, KIAA1611,</p> <p>Protein Interaction Partner: RCHY1, LAMC3, UBC,</p> <p>Protein Size: 818</p>
-------------	--

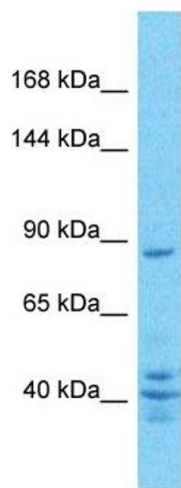
Gene ID:	90338
NCBI Accession:	XP_006723525
UniProt:	Q9HCG1

Application Details

Application Notes:	Optimal working dilution should be determined by the investigator.
Restrictions:	For Research Use only

Handling

Format:	Liquid
Buffer:	Liquid. Purified antibody supplied in 1x PBS buffer with 0.09 % (w/v) sodium azide and 2 % sucrose.
Preservative:	Sodium azide
Precaution of Use:	This product contains Sodium azide: a POISONOUS AND HAZARDOUS SUBSTANCE which should be handled by trained staff only.
Storage:	-20 °C
Storage Comment:	For short term use, store at 2-8°C up to 1 week. For long term storage, store at -20°C in small aliquots to prevent freeze-thaw cycles.



Western Blotting

Image 1. Host: Rabbit Target Name: ZN160 Sample Type: PANC1 Whole Cell lysates Antibody Dilution: 1.0ug/ml