



[Go to Product page](#)

Datasheet for ABIN5514969  
**anti-METTL1 antibody (C-Term)**

1 Image

### Overview

Quantity:	100 µL
Target:	METTL1
Binding Specificity:	C-Term
Reactivity:	Human, Mouse, Rat, Rabbit, Cow, Dog, Guinea Pig, Horse, Saccharomyces cerevisiae
Host:	Rabbit
Clonality:	Polyclonal
Conjugate:	This METTL1 antibody is un-conjugated
Application:	Western Blotting (WB)

### Product Details

Immunogen:	The immunogen is a synthetic peptide directed towards the C-terminal region of Human METTL1
Sequence:	RIISPTLLAE YAYVLRVGG L VYTITDVLEL HDWMCTHFEE HPLFERVPLE
Predicted Reactivity:	Cow: 93%, Dog: 93%, Guinea Pig: 93%, Horse: 93%, Human: 100%, Mouse: 100%, Rabbit: 93%, Rat: 93%, Yeast: 90%
Characteristics:	This is a rabbit polyclonal antibody against METTL1. It was validated on Western Blot.
Purification:	Affinity Purified

### Target Details

Target:	METTL1
---------	--------

## Target Details

---

Alternative Name:	METTL1 ( <a href="#">METTL1 Products</a> )
Background:	<p>This gene is similar in sequence to the <i>S. cerevisiae</i> YDL201w gene. The gene product contains a conserved S-adenosylmethionine-binding motif and is inactivated by phosphorylation.</p> <p>Alternative splice variants encoding different protein isoforms have been described for this gene. A pseudogene has been identified on chromosome X.</p> <p>Alias Symbols: METTL1, C12orf1,</p> <p>Protein Interaction Partner: WDR4, AKT1, TRM8, PDLIM5, ARPC2, ACTR2, ACTR3, ARPC1B, ARPC4, ARPC5, TOM1L1, KIAA0101, UBE3A, TPD52L2, PRDX2, PRKDC, PRDX1, NUCB1, GTF2I, DR1, AARS, TP53RK, NIF3L1, CTPS2, NPLOC4, DNAAF5, IPO11, TPRKB, CACYBP, KIAA1279, METTL18, UBC, RPS6KA1, RPS6KA3,</p> <p>Protein Size: 276</p>

---

Gene ID: 4234

---

NCBI Accession: [NP\\_075422](#)

---

UniProt: [Q9UBP6](#)

---

## Application Details

---

Application Notes: Optimal working dilution should be determined by the investigator.

---

Restrictions: For Research Use only

---

## Handling

---

Format: Liquid

---

Buffer: Liquid. Purified antibody supplied in 1x PBS buffer with 0.09 % (w/v) sodium azide and 2 % sucrose.

---

Preservative: Sodium azide

---

Precaution of Use: This product contains Sodium azide: a POISONOUS AND HAZARDOUS SUBSTANCE which should be handled by trained staff only.

---

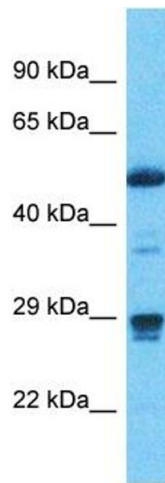
Storage: -20 °C

---

Storage Comment: For short term use, store at 2-8°C up to 1 week. For long term storage, store at -20°C in small

---

aliquots to prevent freeze-thaw cycles.



#### Western Blotting

**Image 1.** Host: Rabbit Target Name: METTL1 Sample Type: Stomach Tumor lysates Antibody Dilution: 1.0ug/ml